

The REUSE Company

RAT – AUTHORIZING Tool: Technical Reference Handbook

By The REUSE Company

RAT – AUTHORIZING Tool assists you in the activity of writing requirements and other natural language text with the power and the simplicity of The REUSE Company Suite



THE
REUSE
COMPANY

RAT - AUTHORIZING TOOL: TECHNICAL REFERENCE HANDBOOK

The REUSE Company

2026 Edition



RAT - AUTHORIZING TOOL: TECHNICAL REFERENCE HANDBOOK

Version 2.4

The REUSE Company
Calle Margarita Salas, 16 2-D
Parque Tecnológico LEGATEC
28919 Leganés – Madrid
SPAIN – EU

<http://www.reusecompany.com>

Phone: (+34) 912 17 25 96

Fax: (+34) 916 80 98 26

Twitter: @ReuseCompany

E-mail: contact@reusecompany.com

Copyright © 2026 Knowledge Centric Solutions, S.L. (ES B87512893) All right reserved, The REUSE Company, RQA – QUALITY Studio, SES ENGINEERING Studio, KM – KNOWLEDGE Manager, RAT – AUTHORIZING Tool, TRACEABILITY Studio, V&V Studio, OSLC Knowledge Management and other TRC products, brands and trademarks are property of Knowledge Centric Solutions, S.L. Other products, brands and trademarks are property of their respective owners/companies.

Changes History:

Version	Date	Changes
1.0	September 2019	Initial version
1.1	October 2019	Added Plugin for Capella
1.2	November 2019	Added Widget for DNG and Troubleshooting
1.3	March 2020	Corrected Widget for DNG
1.4	March 2020	Added Install the DNG Web Service
1.5	October 2020	Added new section 3.8.1
1.6	April 2021	Update to v18.5
1.7	June 2021	Added RAT – AUTHORIZING TOOL Web Service for Teamcenter (3.9)
1.8	June 2021	Added new section 4.2 and section 3.9 updated
2.0	December 2022	New V22
2.1	January 2023	Added section 3.3
2.2	September 2023	New version V23.2
2.3	December 2024	New version V23.4
2.4	December 2025	New version V23.5

Table of Contents

1 Introduction.....	9
2 Checking if an Application is Running in 32-bits or 64-bits	11
2.1 Checking your OS Version	11
2.2 Determining the Version of your Systems Engineering Tool in a 64-bits OS	12
3 RAT – AUTHORIZING Tool as a Plugin Installation.....	15
3.1 RAT – AUTHORIZING Tool Plugin for DOORS.....	15
3.1.1 RAT – AUTHORIZING Tool Plugin for DOORS Installation Via Wizard.....	15
3.1.2 RAT – AUTHORIZING Tool Plugin for DOORS Installation in Silent Mode	22
3.2 RAT – AUTHORIZING Tool Plugin for Capella.....	22
3.2.1 RAT – AUTHORIZING Tool Plugin for Capella Installation Via Wizard	22
3.2.2 RAT – AUTHORIZING Tool Plugin for Capella Installation in Silent Mode	28
3.3 RAT – AUTHORIZING Tool Plugin for PTC Windchill	29
3.3.1 RAT – AUTHORIZING Tool Plugin for PTC Windchill Installation Via Wizard.	29
3.3.2 RAT – AUTHORIZING Tool Plugin for PTC Windchill Installation in Silent Mode	36
3.3.3 Configuring the RAT – AUTHORIZING Tool Plugin for PTC Windchill	36

1 Introduction

This document applies to the version 23.5 of the product.

This guide will instruct you on installing RAT – AUTHORIZING Tool plugins. Using this tool, allows you to author your work-products in each of those tools.

The full list of RAT – AUTHORIZING Tool Plugins is the following:

- RAT – AUTHORIZING Tool plugin for DOORS (different versions for 32-bits and 64-bits Operating Systems)
- RAT – AUTHORIZING Tool for Capella
- RAT – AUTHORIZING Tool for PTC Windchill

In the following chapters the installation steps for each of them will be described.

2 Checking if an Application is Running in 32-bits or 64-bits

Only for 64-bits operating systems

When the Operating System being used is a 64-bits, there are some applications that can have 32-bits and 64-bits versions. This is important when finding a suitable RAT – AUTHORIZING Tool plugin for your application as the version of the plugin must match the version of the Systems Engineering tool. In this chapter we will show you how to find out this information.

2.1 Checking your OS Version

The first task is to check that your Operating System version is 32-bits or 64-bits. To do so, just go to the Start Menu and type 'about your PC' as shown in the next figure and select it (first option in the Best Match group).

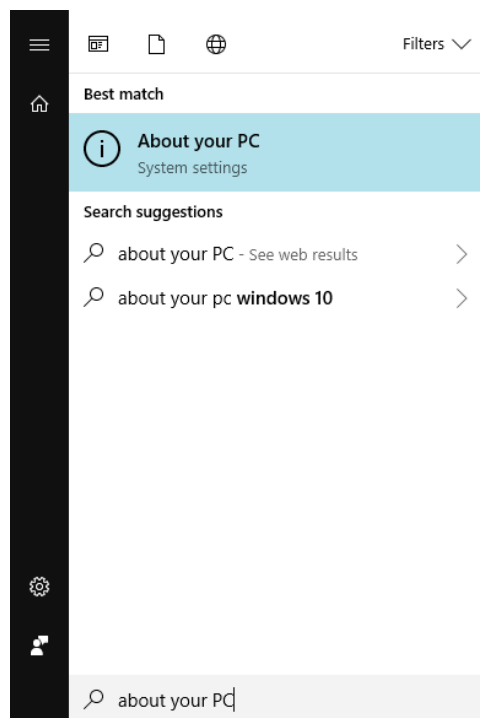


FIGURE 1

Then locate the line 'System type' shown in red in the next figure, it will tell you which version is installed on your Operating System (in the figure it's a 64-bits version). If so, you have to find the version of your Systems Engineering tool to install the matching version of the RAT –

AUTHORING Tool plugin. If your Operating System is 32-bits, just select the 32-bits version of the plugin when needed.

About

Your PC is being monitored and protected.

[See details in Windows Security](#)

Device specifications

Device name	KCS-00028
Full device name	KCS-00028.kcs.local
Processor	Intel(R) Core(TM) i7-4790 CPU @ 3.60GHz 3.60 GHz
Installed RAM	16.0 GB
Device ID	E83EE107-A616-4BF8-B4DB-076DFE19C5F8
Product ID	00330-71316-02571-AAOEM
System type	64-bit operating system, x64-based processor
Pen and touch	No pen or touch input is available for this display

Copy

Rename this PC

FIGURE 2

2.2 Determining the Version of your Systems Engineering Tool in a 64-bits OS

The easiest way to do it is by using the Task Manager, finding application process in the process tab and having a look at its description.

First, simply execute the desired application.

Then open the Task Manager. You have several options to do it:

- You can use the keyboard shortcut Control + Shift + Escape.
- Another option is to lock your session by using the Control + Shift + Delete keyboard shortcut and then in the options selecting Tasks Manager.
- And other option is to click with the right click of the mouse in the taskbar and then select "Task Manager" in the options. As shown in the following picture.

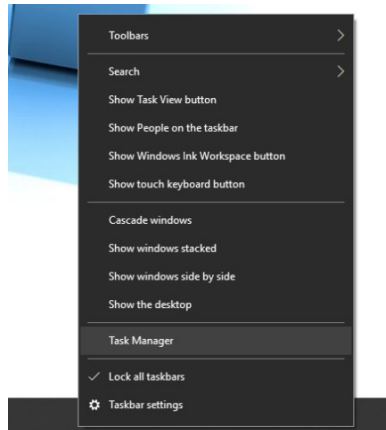


FIGURE 3

When the Task Manager is open, go to the Processes tab, then look up in the list the application name and finally, check if there's a (32 bit) mark at the end.

For example, in the following figure, you can see that the Excel process does not have this mark, however, the DOORS process does have it. That means that the Excel process is 64-bits and DOORS is 32-bits. Knowing this information, you can continue for the following steps. In this case, the suitable version for RAT – AUTHORIZING Tool plugin for DOORS would be the 32-bits version.

Task Manager				
File Options View				
Processes Performance App history Start-up Users Details Services				
Name	Status	1% CPU	31% Memory	
Apps (10)				
> DOORS (32 bit)		0%	79.1 MB	
> Firefox (7)		0%	800.2 MB	
> Microsoft Excel		0%	93.3 MB	
> Microsoft Outlook		0%	116.9 MB	
> Microsoft Word (3)		0%	307.5 MB	
> Notepad++ : a free (GNU) source code editor (32 bit) (2)		0%	43.2 MB	
> Paint		0%	49.2 MB	
> Settings		0%	55.1 MB	
> Task Manager		0.6%	21.5 MB	
> Windows Explorer		0%	71.7 MB	
Background processes (73)				
> AcroTray (32 bit)		0%	1.2 MB	
> Adobe Acrobat Update Service (32 bit)		0%	1.0 MB	
<div> <div>Fewer details</div> <div>End task</div> </div>				

FIGURE 4

3 RAT – AUTHORING Tool as a Plugin Installation

RAT – AUTHORING Tool may be included as a plugin in different data managing tools related to the SE texts. By now, RAT – AUTHORING Tool can be added to IBM DOORS, Capella and PTC Widchill.

3.1 RAT – AUTHORING Tool Plugin for DOORS

First, check that you have a DOORS client installed on your machine.

Then check the DOORS version you have installed: 32-bits or 64-bits. See more details in chapter 2.

Quit all DOORS clients that you may be executing before continuing.

Then download the latest **RAT plugin for DOORS** installer from TRC website, matching the DOORS version installation.

There are two possibilities to install RAT – AUTHORING Tool plugin for DOORS:

- The most typical one is executing the installer with administration rights; an installation wizard will guide to provide all the necessary parameters to perform the installation and at the end the tool will be installed.
- There is another possibility to install it from the command line where all the parameters are provided beforehand, and the installation will be done without any further user interaction.

3.1.1 RAT – AUTHORING Tool Plugin for DOORS Installation Via Wizard

Next, execute the selected RAT – AUTHORING Tool plugin for DOORS installer with administration rights. This document will guide your through the different windows (steps) of the installation wizard step by step.

- Select Setup Language: in this first window you can select the language of the installation wizard by choosing between English and Spanish.

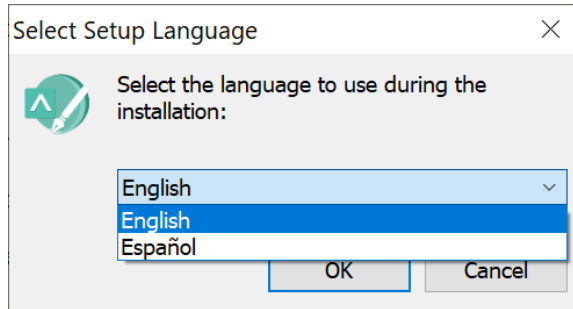


FIGURE 5

NOTE: This language selection is not the language that the RAT – AUTHORING Tool plugin for DOORS user interface will have. The RAT – AUTHORING Tool plugin for DOORS user interface language will rely on the host application, in this case DOORS.

- **Welcome:** this window will introduce all the actions to be performed while installing the **RAT plugin for DOORS** application, you only have to read the instructions and click on the "Next >" button.

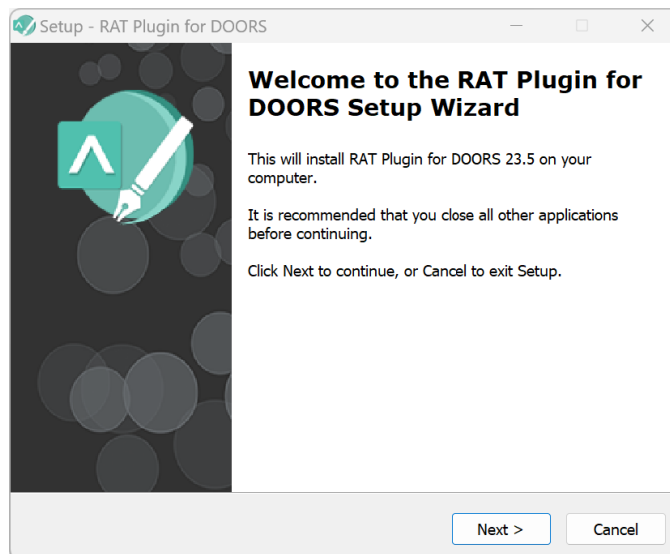


FIGURE 6

- **License Agreement:** this window will show the license agreement you need to accept if you want to use the application. Please read it carefully before accepting it, then select the first option below the text and then click on the "Next >" button. However, if you don't agree just click on the "Cancel" button, it will force finish the installation wizard and it won't install the application.

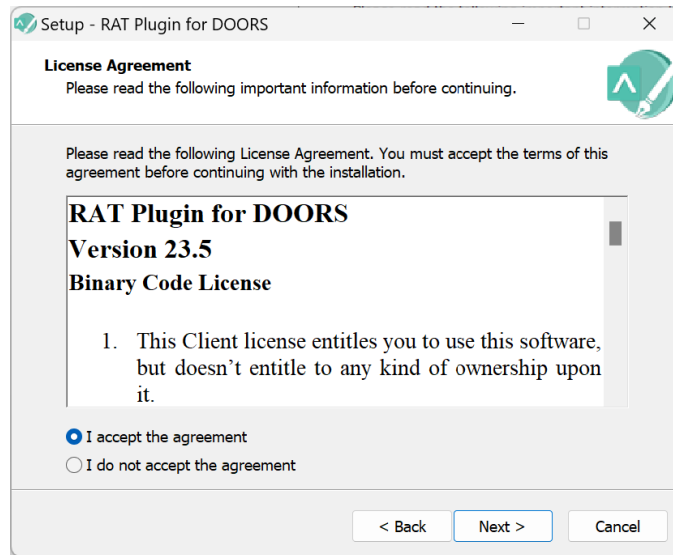


FIGURE 7

- *Systems Engineering Suite Server*: as described in the document to install the SES Server, the application will rely on the configuration established in SES Server, so the only configuration needed in the RAT – AUTHORIZING Tool is to know where the SES Server is.

This window will ask for the SES Server computer name or IP address and its port: 16555.

NOTE: it's not possible to change this port when installing SES Server, thus the port configuration here must be 16555, this restriction will be removed in the following versions.

When these fields are completed, click on the "Next >" button.

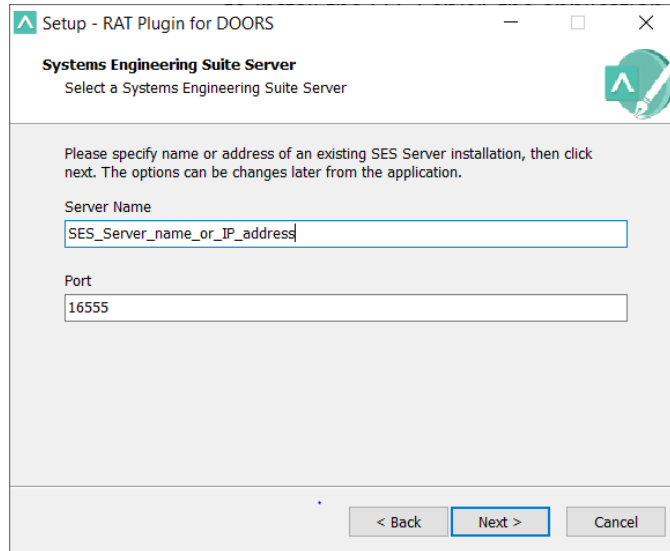


FIGURE 8

- **Select Destination Location:** in this window you can select the location where the application is going to be installed. By default, the wizard will suggest installing the application in your "Program files" folder under the folder "The REUSE Company" and the subfolder with the name of the application. But you can choose any other destination, either by typing it in the textbox or by clicking on the "Browse" button on the right-hand side of the location textbox and navigating through your computer storage system to find the suitable location for it. When the path is selected, just click on the "Next >" button.

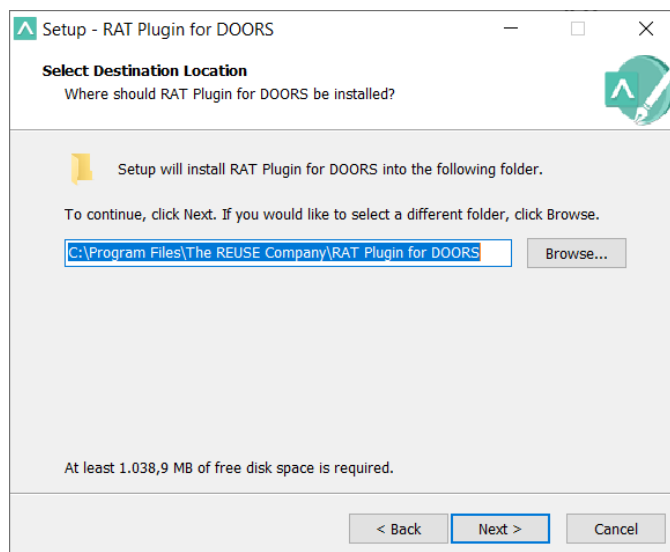


FIGURE 9

- *DOORS Version:* this window will only appear when detecting more than one installation of DOORS client on the machine.
- *Select Start Menu Folder:* in this window you will be able to select where in your start menu the shortcuts to the application must be created. By default, the installer proposes to create them under the folder "The REUSE Company" and the subfolder with the name of the application:

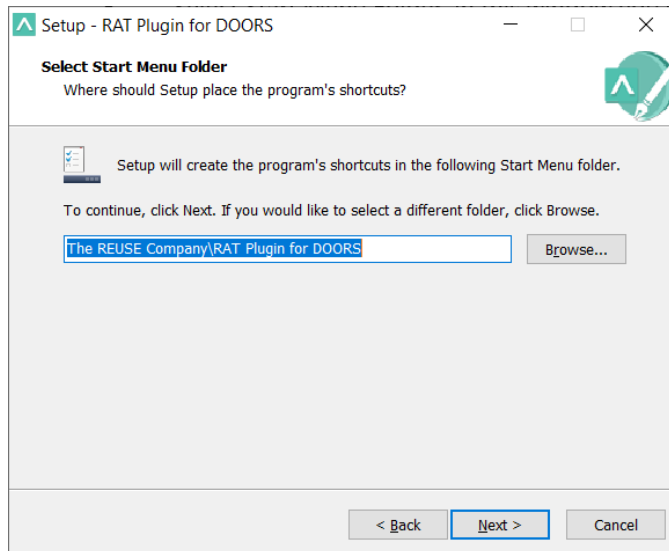


FIGURE 10

- *Ready to Install:* this is the last step before installing the application in your system. It holds a description of the parameters compiled through this installation wizard. If one or more of the parameters is not right for your installation, just click on the "< Back" repetitively until you reach the step to reconfigure your selections. When all the parameters are correct, just click on the "Next >" button.

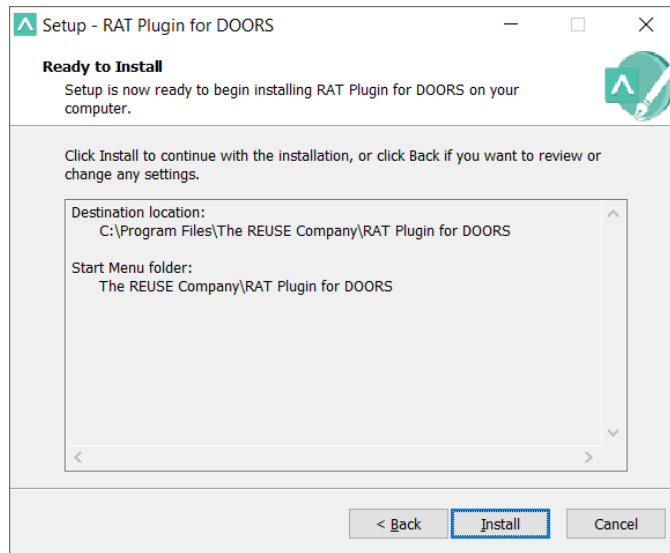


FIGURE 11

- *Installing:* in this window you don't have to do anything but wait until the installation is completed. Just in case you have to cancel the installation, click on the "Cancel" button. Otherwise wait until the process is finished and the wizard will move automatically to the next step.

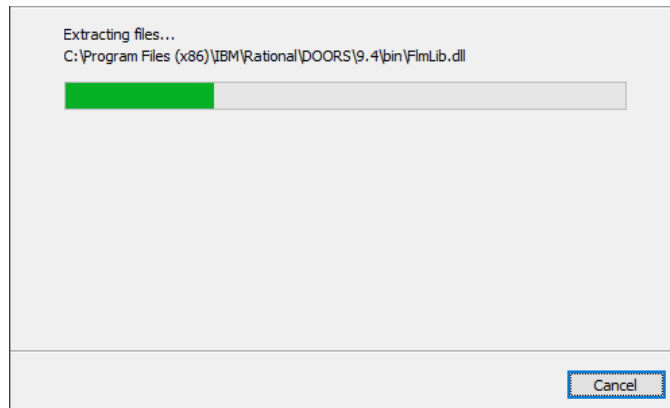


FIGURE 12

- *Completing the RAT Plugin for DOORS Setup Wizard:* this window appears to notify you when the installation has finished successfully. Just click on the "Finish" button and you will have finished installing the application.

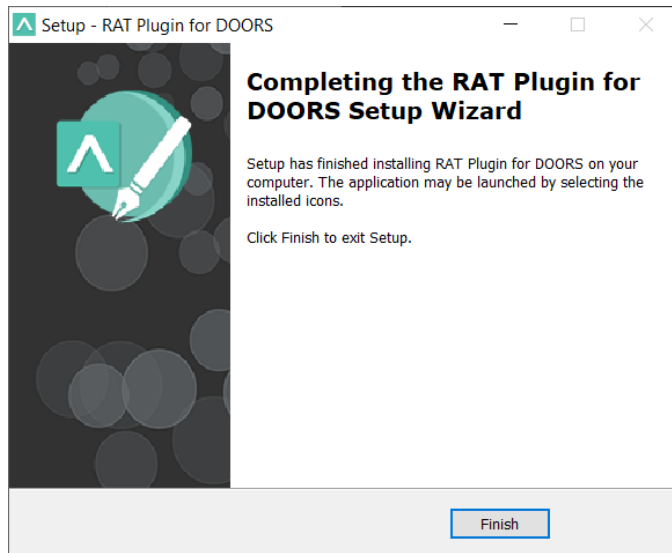
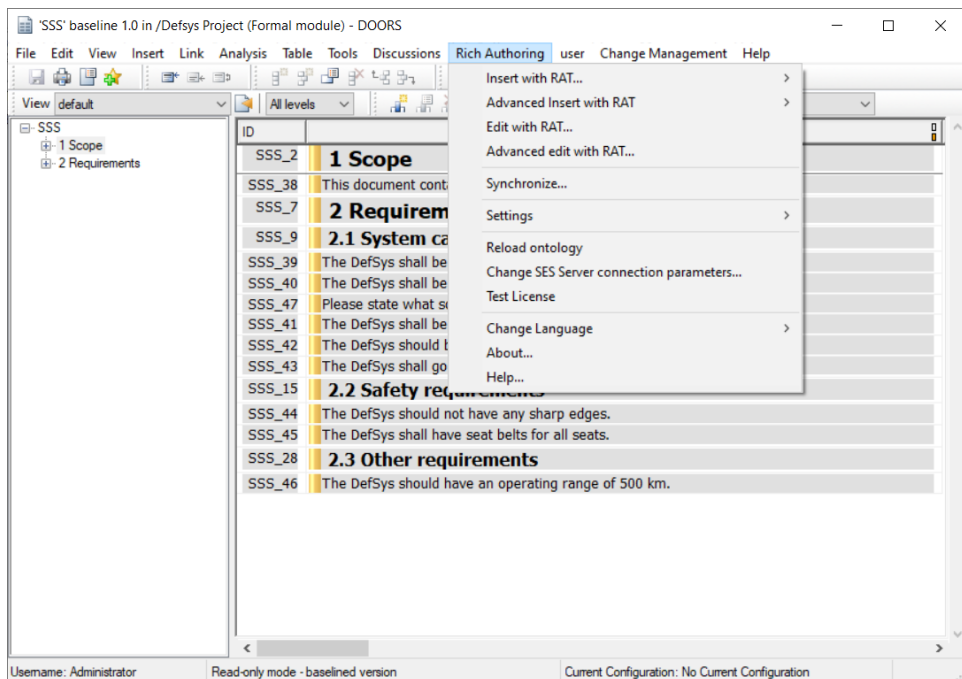


FIGURE 13

- Now your **RAT plugin for DOORS** is installed. Open DOORS client, then select a module and open it. There will be a new menu option named as 'Rich Authoring'. From that menu you will have access to all the RAT – AUTHORING Tool plugin functionalities.



3.1.2 RAT – AUTHORING Tool Plugin for DOORS Installation in Silent Mode

The command line with parameters to install it is like this:

```
<FileName>.exe /verysilent /dir="D:\REUSE \EsCustom" /GROUP="ES
Custom Group" /rqssserver <your.host.name>/rqssport <portNumber>
/doorsVersion <8.0, 8.1 ... 9.7>
```

NOTE: Remember to open the command line window with administration rights, before executing the previous command.

Mandatory parameters:

- /verysilent: installation mode
 - o /dir="C:\custom\path\to\install\<install_app>"
 - o /group="<group_folder_name_windows>"
- /rqssserver: SES Server hostname
- /rqssport: SES Server port
- /doorsVersion: IBM Rational DOORS version (from version 8.0 to 9.7)

3.2 RAT – AUTHORING Tool Plugin for Capella

First, check that you have a Capella client installed on your machine and that you have the Capella Requirements Dropins imported.

Quit all Capella clients that you may be executing before continuing.

Then download the latest **RAT plugin for Capella** installer from TRC website.

There are two possibilities to install RAT – AUTHORING Tool plugin for Capella:

- The most typical one is executing the installer with administration rights; an installation wizard will guide to provide all the necessary parameters to perform the installation and at the end the tool will be installed.
- There is another possibility to install it from the command line where all the parameters are provided beforehand, and the installation will be done without any further user interaction.

3.2.1 RAT – AUTHORING Tool Plugin for Capella Installation Via Wizard

Next, execute the selected **RAT plugin for Capella** installer with administration rights. This document will guide your through the different windows (steps) of the installation wizard step by step.

Then, execute the installer:

- **Select Setup Language:** in this first window you can select the language of the installation wizard. You can choose between English and Spanish.

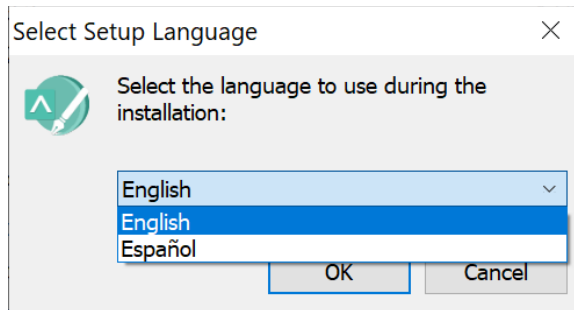


FIGURE 15

*NOTE: This language selection is not the language that the **RAT plugin for Capella** user interface will have. The **RAT plugin for Capella** user interface language will rely on the host application, in this case Capella.*

- **Welcome:** this window will introduce all the actions to be performed while installing the **RAT plugin for Capella** application, you only have to read the instructions and click on the "Next >" button.

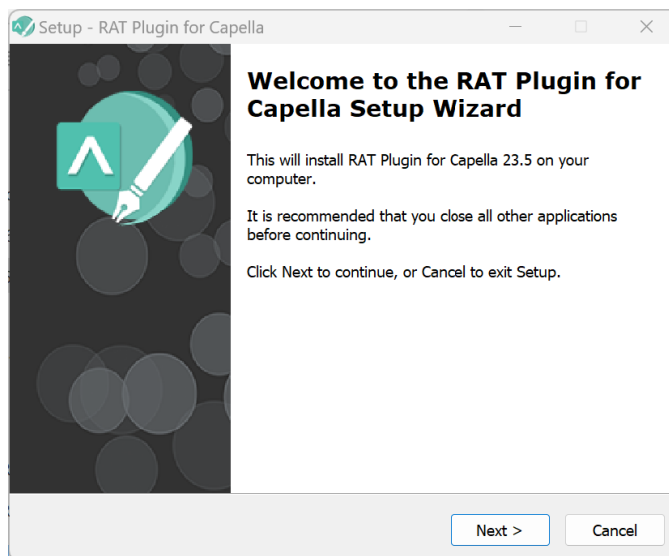


FIGURE 16

- **License Agreement:** this window will show the license agreement you will need to accept if you want to use the application. Please read it carefully before accepting it, then select the first option below the text and then click on the "Next >" button. However, if you don't agree just click on the "Cancel" button, it will force finish the installation wizard and it won't install the application.

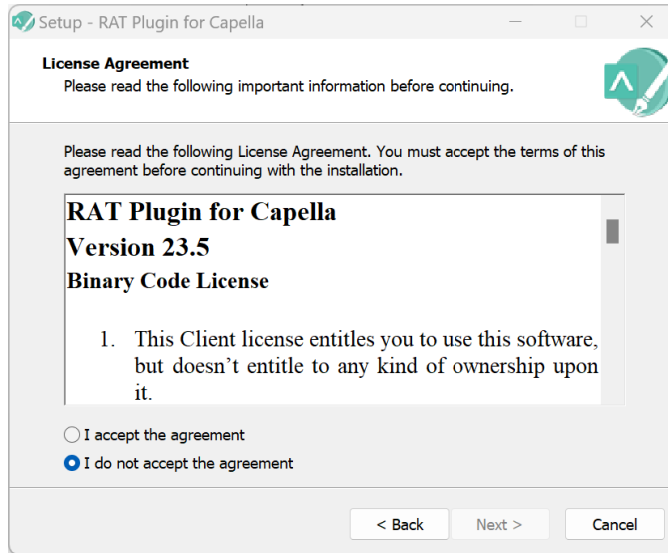


FIGURE 17

- *Select Capella Location:* in this window you will have to specify the location where Capella has been installed. The reason is to include a reference to the Authoring plugin libraries to add the suitable menus and context menu options. This file is typically located on your Capella installation folder in Program files. E.g.: "C:\Program Files\Capella"

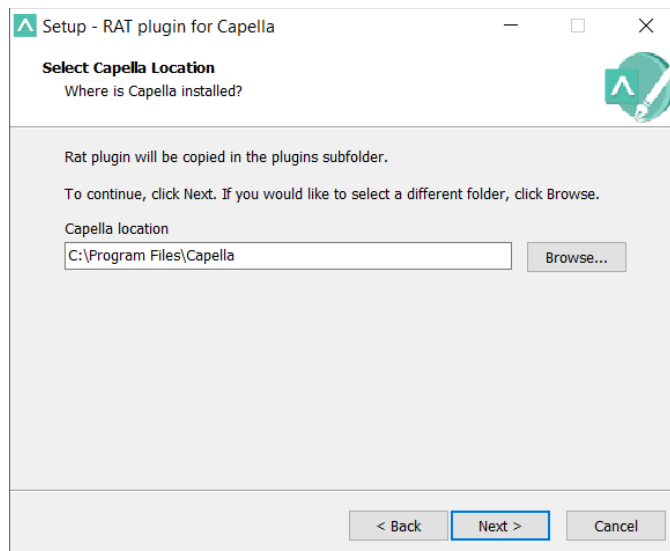


FIGURE 18

- *Systems Engineering Suite Server:* as described in the document to install the SES Server, the application will rely on the configuration established in SES Server, so the

only configuration needed in the RAT – AUTHORIZING Tool is to know where the SES Server is.

This window will ask for the SES Server computer name or IP address and its port: 16555.

NOTE: it's not possible to change this port when installing SES Server, thus the port configuration here must be 16555, this restriction will be removed in the following versions.

When these fields are completed, click on the "Next >" button.

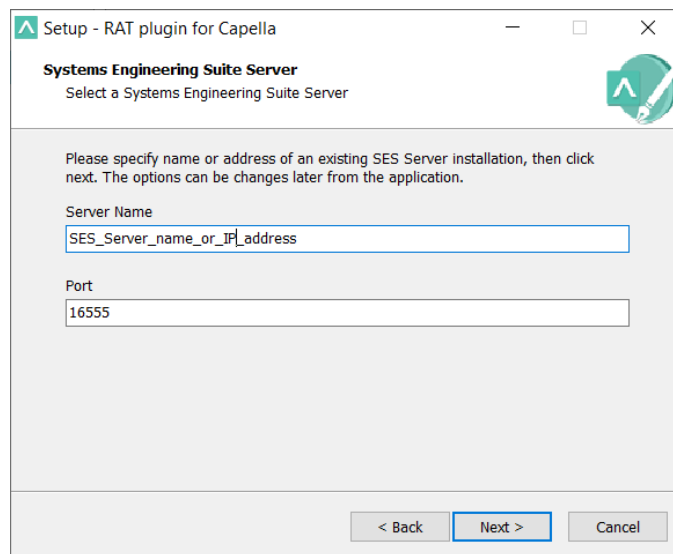


FIGURE 19

- **Select Destination Location:** in this window you can select the location where the application is going to be installed. By default, it will be suggested to install the application in your "Program files" folder under the folder "The REUSE Company" and the subfolder with the name of the application. But you can choose any other destination, either by typing it in the textbox or by clicking on the "Browse" button on the right-hand side of the location textbox and navigating through your computer storage system to find the suitable location for it. When the path is selected, just click on the "Next >" button.

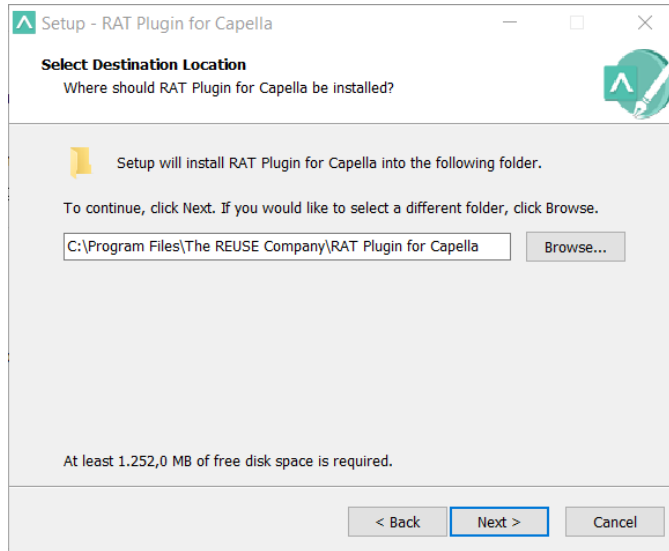


FIGURE 20

- **Select Start Menu Folder:** in this window you will be able to select where in your start menu the shortcuts to the application must be created. By default, the installer proposes to create them under the folder “The REUSE Company” and the subfolder with the name of the application:

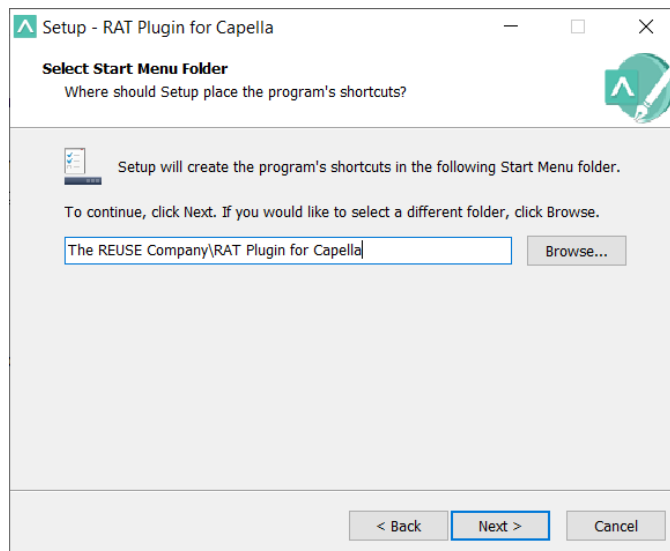


FIGURE 21

- **Ready to Install:** this is the last step before installing the application on your system. It holds a description of the parameters compiled through this installation wizard. If one or more of the parameters is not right for your installation, just click “< Back”

repetitively until you reach the step to reconfigure your selections. When all the parameters are correct, just click on the “Next >” button.

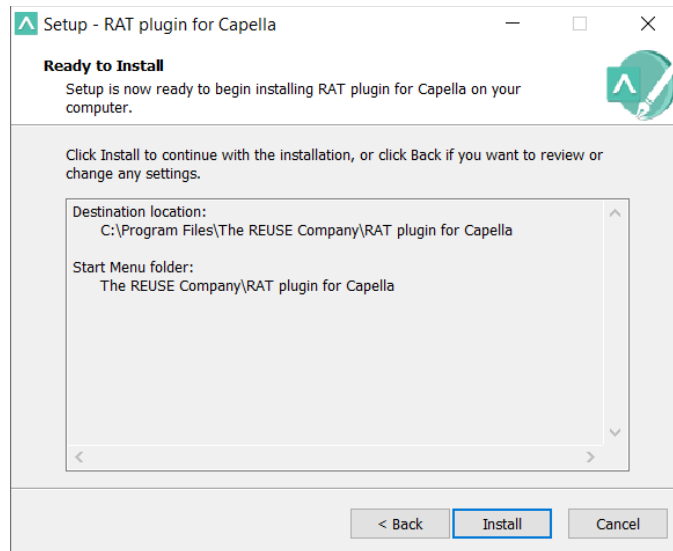


FIGURE 22

- *Installing:* in this window you don't have to do anything but wait until the installation is completed. Just in case you have to cancel the installation, click on the “Cancel” button. Otherwise wait until the process is finished and the wizard will move automatically to the next step.

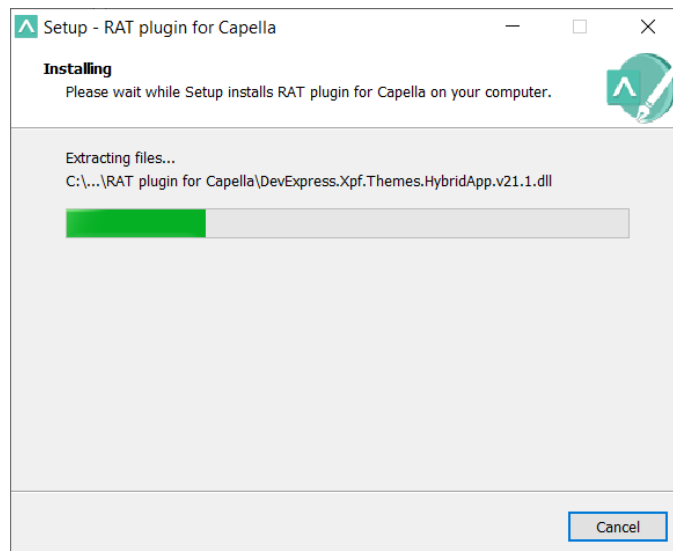


FIGURE 23

- *Completing the RAT Plugin for Capella Setup Wizard:* this window appears in order to notify you when the installation has finished successfully. Just click on the “Finish” button and you will have finished installing the application.

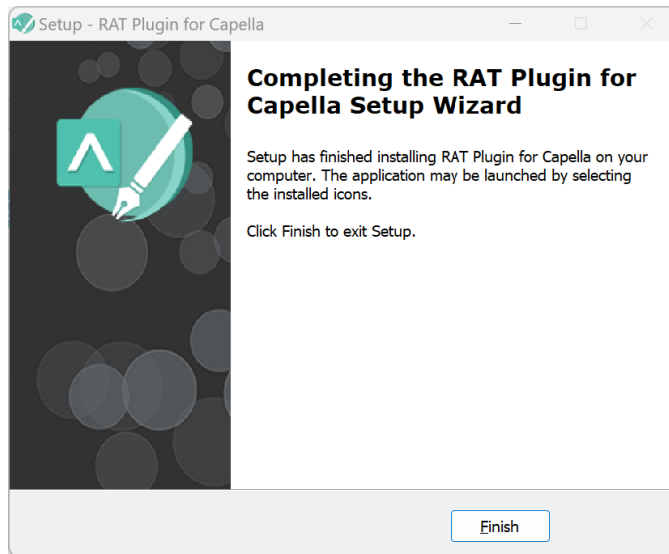


FIGURE 24

3.2.2 RAT – AUTHORIZING Tool Plugin for Capella Installation in Silent Mode

The command line with parameters to install it is like this:

```
<FileName>.exe /verysilent /dir="D:\REUSE \EsCustom" /GROUP="ES
Custom Group" /rqssserver <your.host.name> /rqssport <portNumber>
/capellaLocation <Capella_installation_full_path>
```

NOTE: Remember to open the command line window with administration rights, before executing the previous command.

Mandatory parameters:

- /verysilent: installation mode
 - o /dir="C:\custom\path\to\install\<install_app>"
 - o /group="<group_folder_name_windows>"
- /rqssserver: SES Server hostname
- /rqssport: SES Server port
- /capellaLocation: the value must be the full path (between quotes ("")) to the Capella installation folder. E.g.: "C:\Program Files\Capella 1.3.0\capella"

3.3 RAT – AUTHORIZING Tool Plugin for PTC Windchill

First, check that you have a PTC Windchill client installed on your machine.

Then download the latest **RAT plugin for Windchill** installer from the TRC website.

There are two possibilities to install RAT – AUTHORIZING Tool plugin for PTC Windchill:

- The most typical one is executing the installer with administration rights; an installation wizard will guide to provide all the necessary parameters to perform the installation and at the end the tool will be installed.
- There is another possibility to install it from the command line where all the parameters are provided beforehand, and the installation will be done without any further user interaction.

3.3.1 RAT – AUTHORIZING Tool Plugin for PTC Windchill Installation Via Wizard.

Next, execute the **RAT plugin for Windchill** installer with administration rights. This document will guide your through the different windows (steps) of the installation wizard step by step.

PTC Windchill was previously PTC Integrity. You may find documents, files or mentions with the old name. For example, the last installer is *RATPluginForIntegritySetup_v22.3.1RC2a.exe*.

Then, execute the installer:

- Select Setup Language: in this first window you can select the language of the installation wizard. You can choose between English and Spanish.

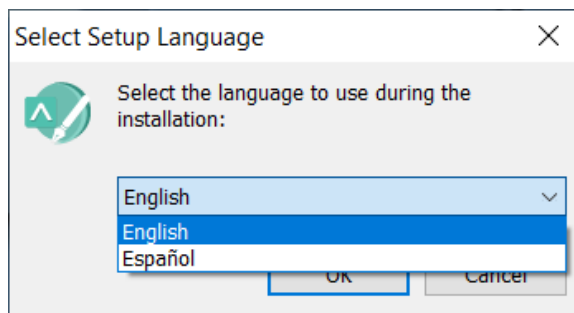


FIGURE 25

*NOTE: This language selection is not the language that the **RAT plugin for Windchill** user interface will have. The **RAT plugin for Windchill** user interface language will rely on the host application, in this case Windchill.*

- *Welcome:* this window will introduce all the actions to be performed while installing the **RAT plugin for Windchill** application, you only have to read the instructions and click on the "Next >" button.

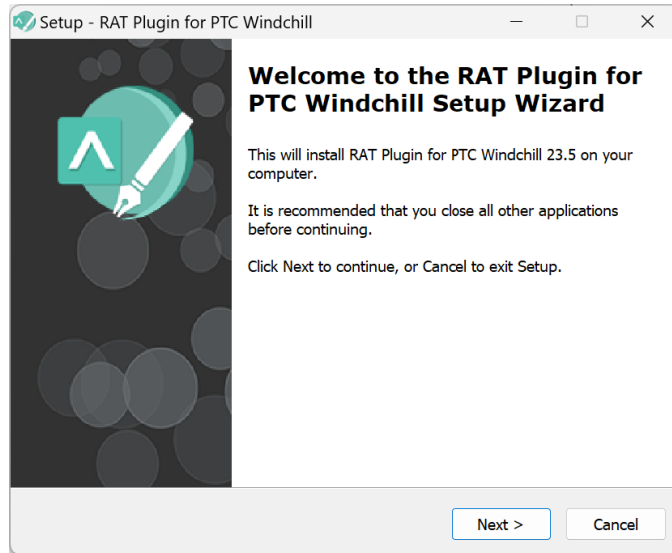


FIGURE 26

- *License Agreement:* this window will show the license agreement you will need to accept if you want to use the application. Please read it carefully before accepting it, then select the first option below the text and then click on the "Next >" button. However, if you don't agree just click on the "Cancel" button, it will force finish the installation wizard and it won't install the application.

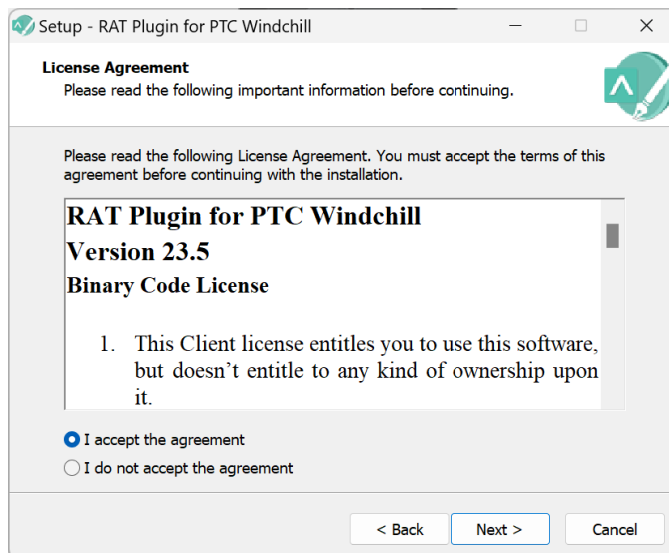


FIGURE 27

- *Systems Engineering Suite Server:* as described in the document to install the SES Server, the application will rely on the configuration established in SES Server, so the

one and only configuration needed in the RAT – AUTHORIZING Tool is to know where the SES Server is.

This window will ask for the SES Server computer name or IP address and its port: 16555.

NOTE: it's not possible to change this port when installing SES Server, thus the port configuration here must be 16555, this restriction will be removed in the following versions.

When these fields are completed, click on the "Next >" button.

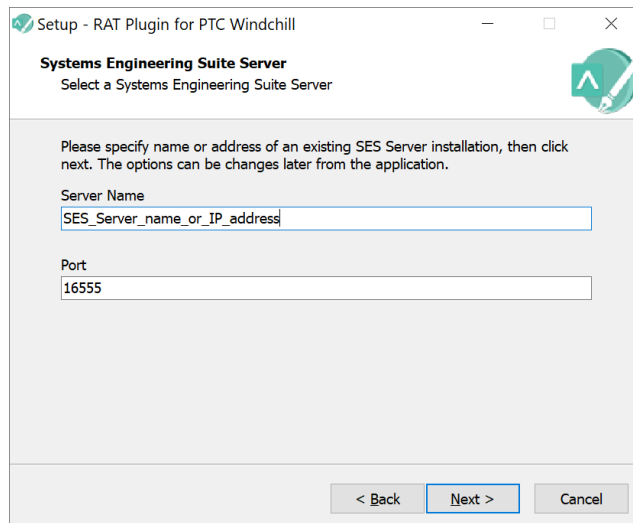


FIGURE 28

- *Platform:* if your OS is in 64-bits, the installation wizard will give you the chance to select your preferred platform (32- or 64-bit). When selected, click on the "Next >" button.

If your OS is 32-bits, you are not going to see this window.

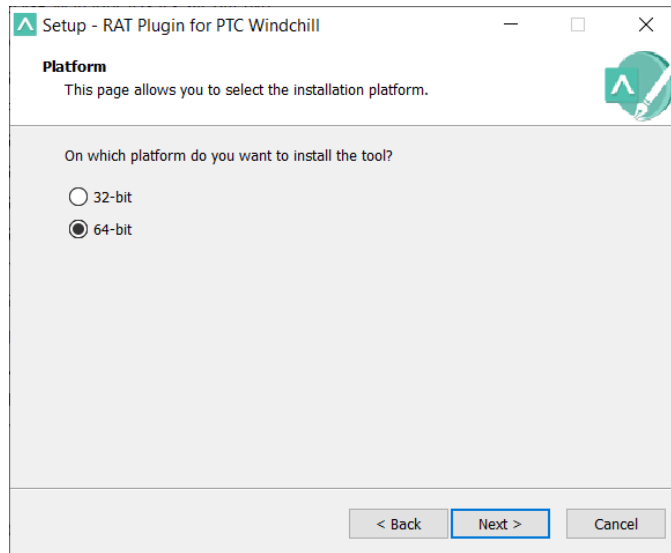


FIGURE 29

- *Japanese language support:* Select *Yes* to get the tool for Japanese language support installed.

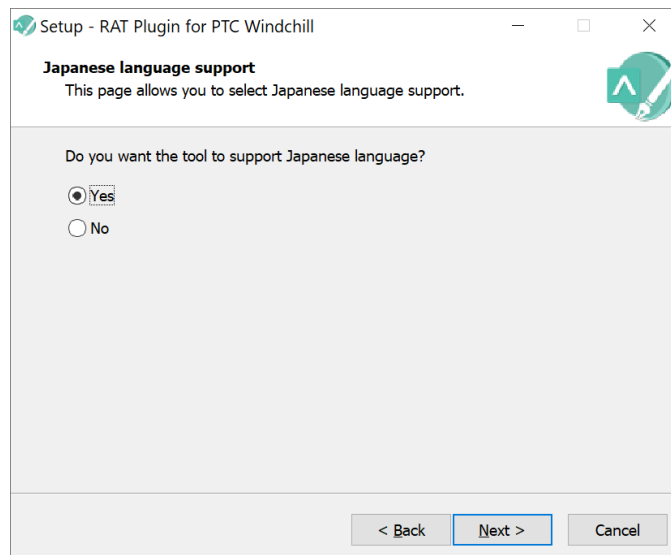


FIGURE 30

- *Select Destination Location:* in this window you can select the location where the application is going to be installed. By default, it is suggested to install the application in your "Program files" folder under the folder "The REUSE Company" and the subfolder with the name of the application. But you can choose any other destination, either by typing it in the textbox or by clicking on the "Browse" button on the right-hand side of the location textbox and navigating through your computer storage

system to find the suitable location for it. When the path is selected, just click on the "Next >" button.

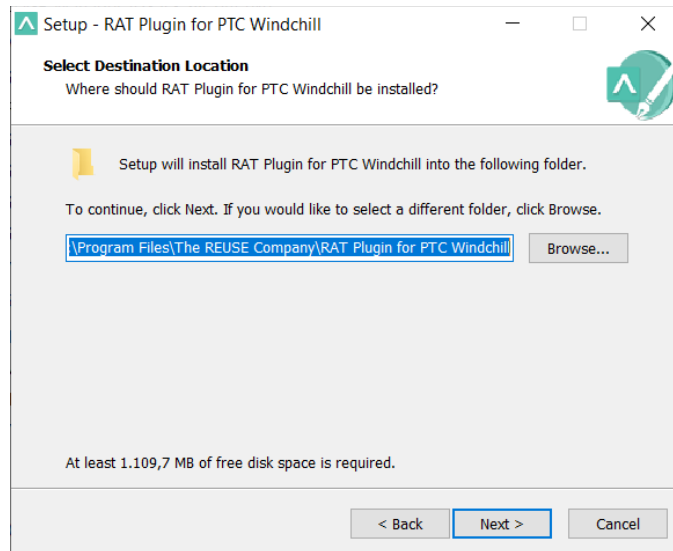


FIGURE 31

- **Select Start Menu Folder:** in this window you will be able to select where in your start menu the shortcuts to the application must be created. By default, the installer proposes to create them under the folder "The REUSE Company" and the subfolder with the name of the application:

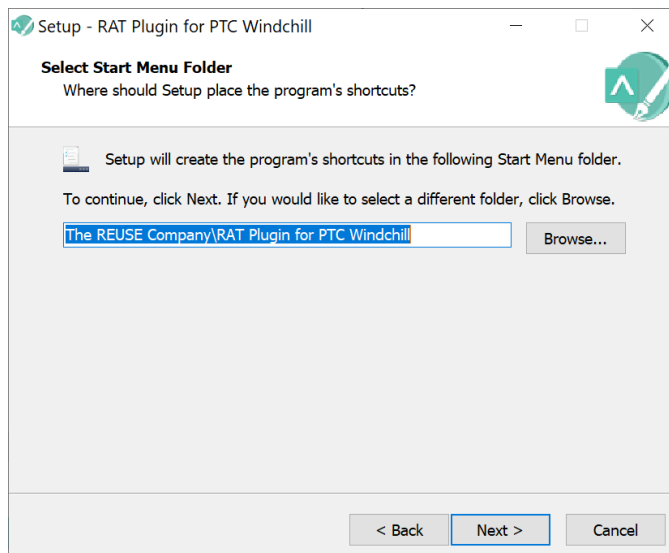


FIGURE 32

- *Ready to Install:* this is the last step before installing the application on your system. It holds a description of the parameters compiled through this installation wizard. If one or more of the parameters is not right for your installation, just click "< Back" repetitively until you reach the step to reconfigure your selections. When all the parameters are correct, just click on the "Next >" button.

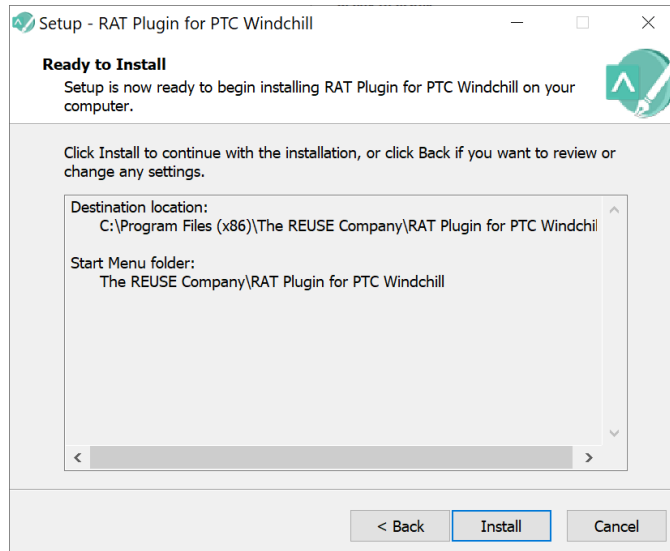


FIGURE 33

- *Installing:* in this window you don't have to do anything but wait until the installation is completed. Just in case you have to cancel the installation, click on the "Cancel" button. Otherwise wait until the process is finished and the wizard will move automatically to the next step.

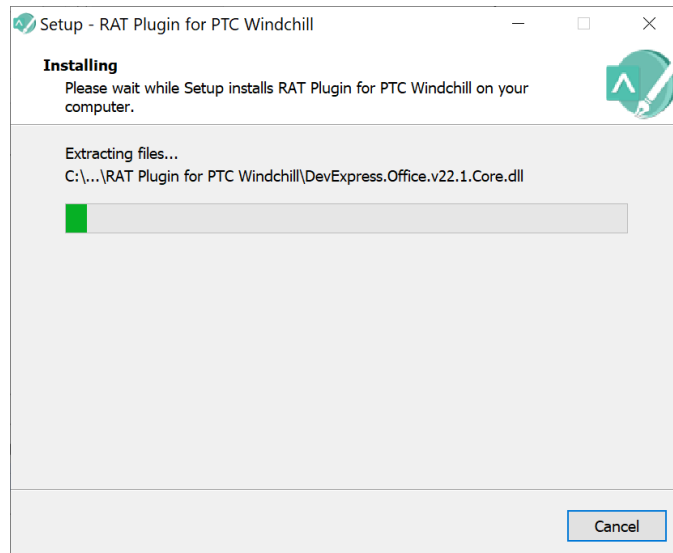


FIGURE 34

- *Completing the RAT Plugin for Windchill Setup Wizard:* this window appears in order to notify you when the installation has finished successfully. Just click on the "Finish" button and you will have finished installing the application.

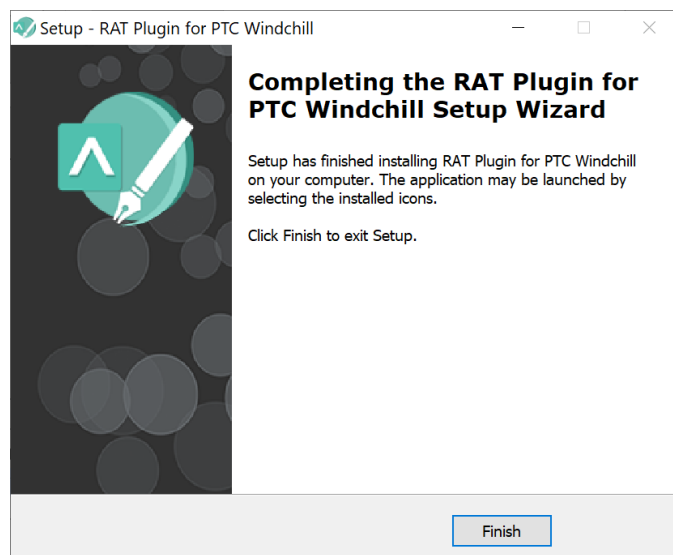


FIGURE 35

Now your **RAT plugin for Windchill** is installed.

3.3.2 RAT – AUTHORING Tool Plugin for PTC Windchill Installation in Silent Mode

The command line with parameters to install it is like this:

```
<FileName>.exe /verysilent /dir="D:\REUSE \EsCustom" /GROUP="ES
Custom Group" /rqsserver <your.host.name> /rqsport <portNumber>
/platform <platform> /jp <jp>
```

NOTE: Remember to open the command line window with administration rights, before executing the previous command.

Mandatory parameters:

- /verysilent: installation mode
 - o /dir="C:\custom\path\to\install\<install_app>"
 - o /group="<group_folder_name_windows>"
- /rqsserver: server hostname
- /rqssport: server port

The optional parameters are:

- /platform: x86 or x64 (this is only available if the system is 64 bit) (The value by default is x86)
- /jp: True or False (The value by default is True)

3.3.3 Configuring the RAT – AUTHORING Tool Plugin for PTC Windchill

After the installation, you must configure the interaction between the PTC Windchill client and the RAT – AUTHORING Tool plugin. In order to do that, you can find a PDF document called *RAT Plugin for PTC Windchill Configuration.pdf*.

Follow the instructions you are going to find in it to use the RAT – AUTHORING Tool.

At least you need to add the three custom actions you can find in it:

- Add below with RAT
- Add after with RAT
- Edit with RAT

The rest configuration indications are intended only for the PTC Windchill server, so these should be followed only in the server installation. Normally, the user will find all that configuration already installed in the server system.

The REUSE Company

The REUSE Company is an organization specialized in the application of Semantic Representation and Analysis Technologies to a wide range of industries (Aerospace, Defense, Automotive, Naval, Health, ...). Our customers are usually (but not limited to) safety-oriented organizations.

Our focus is on System/Software Reuse, Traceability and Quality applied to all types of work-products throughout the whole SE lifecycle (requirements, SysML Models, physical models, tests cases, data results, manuals, natural language descriptions, fault trees, etc.). The integration of tools and technology from The REUSE Company facilitates the representation, analysis and exploitation of knowledge allowing for a knowledge-centric system engineering approach.

Our mission is to promote system/software and knowledge reuse within any organization, by offering processes, methods, tools and services that make it possible. We offer technology that is fully integrated within the organization's production chain.

