

The REUSE Company

KM – KNOWLEDGE Manager: Technical Reference Handbook

By The REUSE Company

KM – KNOWLEDGE Manager allows you to manage knowledge
from a systems engineering point of view



THE
REUSE
COMPANY

KM – KNOWLEDGE MANAGER: TECHNICAL REFERENCE HANDBOOK

The REUSE Company

2026 Edition



KM – KNOWLEDGE MANAGER: TECHNICAL REFERENCE HANDBOOK

Version 2.7

The REUSE Company
Calle Margarita Salas, 16 2-D
Parque Tecnológico LEGATEC
28919 Leganés – Madrid
SPAIN – EU

<http://www.reusecompany.com>
Phone: (+34) 912 17 25 96
Fax: (+34) 916 80 98 26
Twitter: @ReuseCompany
E-mail: contact@reusecompany.com

Copyright © 2026 Knowledge Centric Solutions, S.L. (ES B87512893) All right reserved, The REUSE Company, RQA – QUALITY Studio, SES ENGINEERING Studio, KM – KNOWLEDGE Manager, TRACEABILITY Studio, V&V Studio, OSLC Knowledge Management and other TRC products, brands and trademarks are property of Knowledge Centric Solutions, S.L. Other products, brands and trademarks are property of their respective owners/companies.

Changes History:

Version	Date	Changes
1.0	October 2019	Initial version
1.1	March 2021	New version for v18.5
2.0	January 2022	New version for v22.1
2.1	August 2022	New version for V22.2
2.2	August 2023	New version V23
2.3	April 2024	New version V23.3
2.4	December 2024	New version V23.4
2.5	May 2025	New version V23.4.2
2.6	November 2025	Section 3.3 update
2.7	December 2025	New version V23.5

Table of Contents

1. Introduction.....	9
2. KM – KNOWLEDGE Manager Installation Guide	11
2.1 Download	11
2.2 KM – KNOWLEDGE Manager Installation with the Installation Wizard	11
2.3 KM – KNOWLEDGE MANAGER Installation in Silent Mode.....	19
3. DB Migration Tool Installation Guide	21
3.1 Introduction.....	21
3.2 Download	21
3.2.1 DB Migration Tool Installation with the Installation Wizard	21
3.2.2 DB Migration Tool Installation in Silent Mode.....	26
3.3 Use of DB Migration Tool	27
4. KM – KNOWLEDGE Manager Online Web Edition Installation Guide	31
4.1 Download	31
4.2 KM – KNOWLEDGE Manager Online Web Edition Installation	31

1. Introduction

This document applies to the 23.5 version of the product.

This guide will help you to install KM – KNOWLEDGE Manager. This process should be done after installing all the licensing components (FlexLM and TRC Vendor Daemon).

Optionally, after installing KM – KNOWLEDGE Manager, you can find the installation process of the DB Migration Tool and how to use it.

Also, this guide helps the user to install KM – KNOWLEDGE Manager Online Web Edition.

2. KM – KNOWLEDGE Manager Installation Guide

There are two ways to install KM – KNOWLEDGE Manager:

- The most typical one is executing the installer with administration rights; an installation wizard will guide you to provide all the necessary parameters to perform the installation and at the end the tool will be installed.
- There is another way to install it from the command line, where all the parameters are provided beforehand, and the installation will be done without any further user interaction.

2.1 Download

First, download the KM – KNOWLEDGE Manager installer from the TRC website. Use your navigator to access <https://resources.reusecompany.com/downloads> and then look the version of the product you have licensed. Ask our support service if you need help to find it.

2.2 KM – KNOWLEDGE Manager Installation with the Installation Wizard

Then, execute the installer:

- Select Setup Language: in this first window you can select the language of the installation wizard. You can choose between English and Spanish.

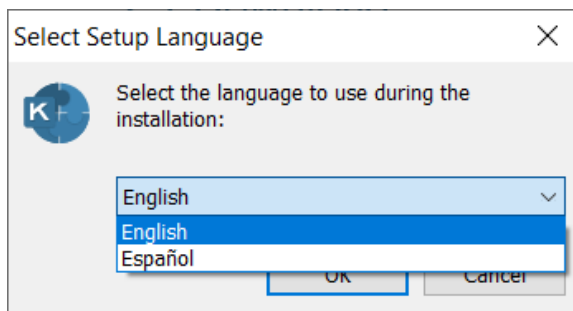


FIGURE 1

NOTE: This language selection is not the language that the KM – KNOWLEDGE Manager user interface will have. The KM – KNOWLEDGE Manager user interface language will rely on your Operating System language. You can always change it in Options button of the Connections window, or in the File menu of the KM – KNOWLEDGE Manager main window.

- **Welcome:** this window will introduce all the actions to be performed while installing the KM – KNOWLEDGE Manager application, you only have to read the instructions and click on the “Next >” button.

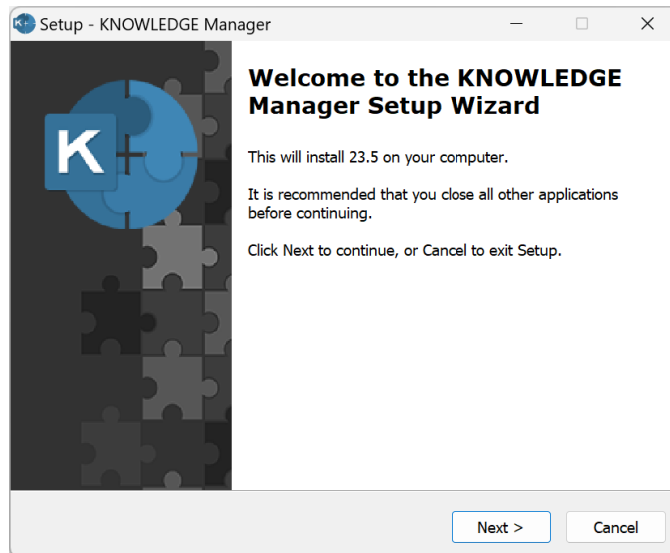


FIGURE 2

- **License Agreement:** this window will show the license agreement you will need to accept if you want to use the application. Please read it carefully before accepting it, then select the first option below the text and then click on the “Next >” button. However, if you do not agree, please click on the “Cancel” button; it will force the installation wizard to finish and it will not install the application.

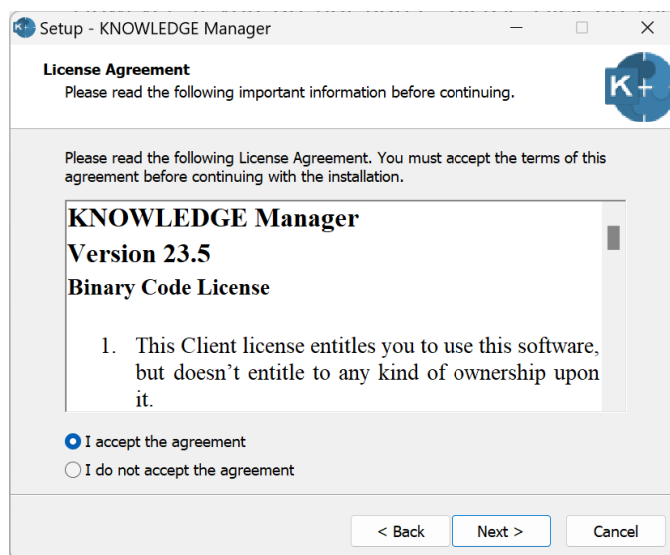


FIGURE 3

- **License Server Selector:** Here you must select the licensing mode contracted. There are two options: License Server and License Server with SES Server. Choosing each one, the next window will vary.

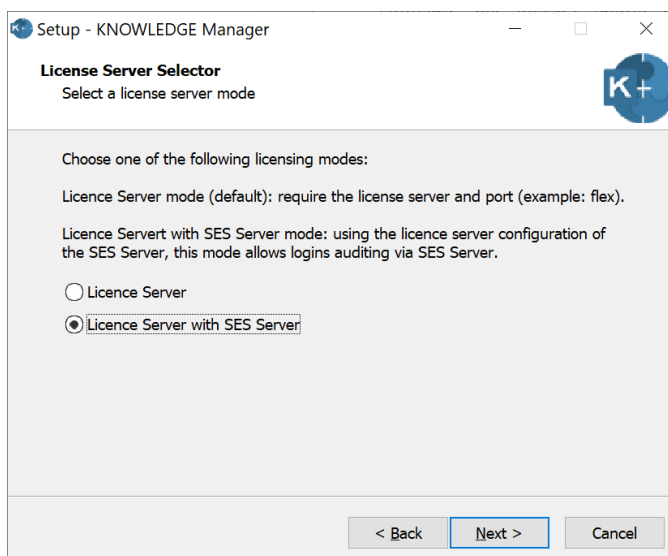


FIGURE 4

- **OPTION 1: License Server:** this window prompts you to introduce the licensing information needed to run the application. Consider the FlexLM installation and your deployment scenario to fill up this window.
 - The 'License Server' field corresponds to the machine name or IP address where the FlexLM is installed.
 - The 'Port' field refers to the PUBLIC port of the FlexLM service you have defined. As mentioned in the FlexLM service installation, two ports are used for the licensing server. The first port (or range) listens to license requests, and the second one opens a point-to-point connection to the TRC Daemon. In this field, the information required is the first setup, the public port.

FIGURE 5

- **OPTION 2: Systems Engineering Suite Server:** This requests the same information, but without the optional field. You must select this option if you want to use the Audit Log feature included in SES Server. The Audit log configuration aims to provide the parameters for logging in a file for every login operation made by the users in the applications of the SES ENGINEERING Studio Suite.

FIGURE 6

- **License Level:** this window requests the type of license to use. You can choose one of the two options:

KM – KNOWLEDGE Manager Lite: Allow the users to access limited functionalities:

- Management of:
 - Terminology
 - Term tags
 - Clusters
 - Tokenization rules
 - Normalization rules
 - Disambiguation rules
 - Probability rules
 - Patterns
 - Formalization
- Import/Export functionalities of libraries
- Management of external interfaces

Full KM – KNOWLEDGE Manager: Allows access to all the features and functions of KM – KNOWLEDGE Manager

Choose the option matching your license and click on the “Next >” button.

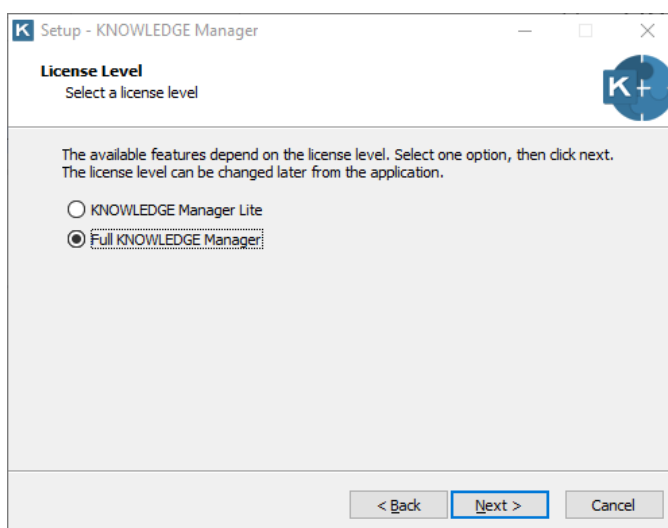


FIGURE 7

- **KNOWLEDGE Manager Security:** this window allows selecting the authentication system used to log in to KM – KNOWLEDGE Manager. There are two options:
 - Using KM – KNOWLEDGE Manager authentication system: the users are created and managed inside KM – KNOWLEDGE Manager.

- Using Windows Authentication via Active Directory items (users or groups): the login is delegated in rules on top of Active Directory items allowing or denying access to the tool.

This configuration is stored independently in each SES Ontology Database, which means that you can have two Ontology Databases with different authentication configurations. The first one using KM – KNOWLEDGE Manager security and the other using Windows Authentication, with the same KM – KNOWLEDGE Manager managing them.

This installation configuration cannot be changed later when using KM – KNOWLEDGE Manager. If you select Active Directory integration, then you cannot use KM – KNOWLEDGE Manager Security for the current installation, and the other way around. To undo this selection, KM – KNOWLEDGE Manager must be uninstalled from the computer and re-installed selecting the other option.

Finally, in the deployment where KM – KNOWLEDGE Manager users are all using Active Directory logins, there should be at least one installation with administrative permissions to create and manage the Active Directory authentication rules.

Choose your version in the window options.

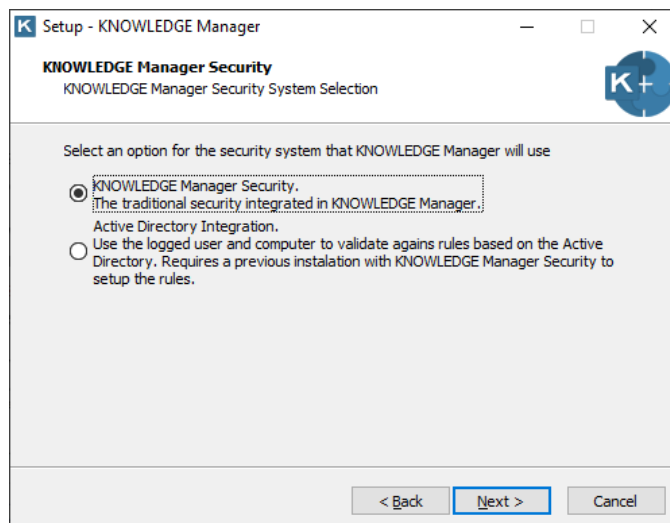


FIGURE 8

- User credentials: This window permits enabling if the user has the possibility to remember their credentials:
 - Allow remember: This option allows the user to store their credentials in the machine, so that they are not introduced in each session.
 - Don't allow remember: This option does not allow the user to store their credentials locally.

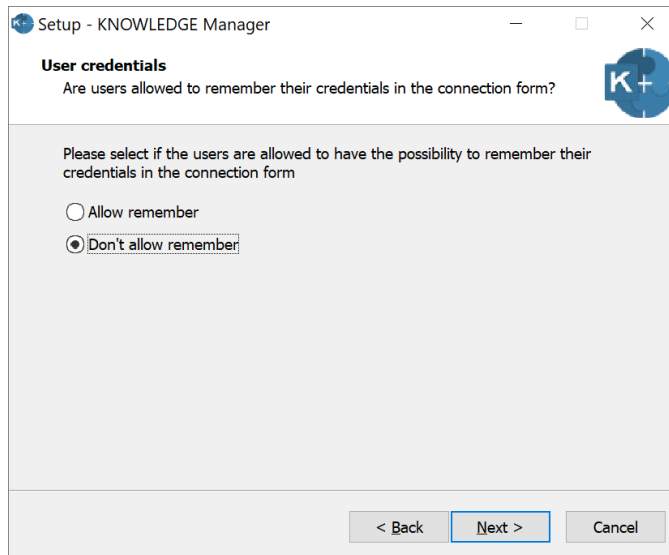


FIGURE 9

- **Select Destination Location:** this window allows the user to select the location where the application is going to be installed. By default, it will be suggested to install the application in the user's "Program files" folder under the folder "The REUSE Company" and the subfolder with the name of the application. This destination folder can be modified, either by typing it in the textbox or by clicking on the "Browse" button on the right-hand side and navigating through the computer storage system to find a suitable location. When the path is selected, please click on the "Next >" button.

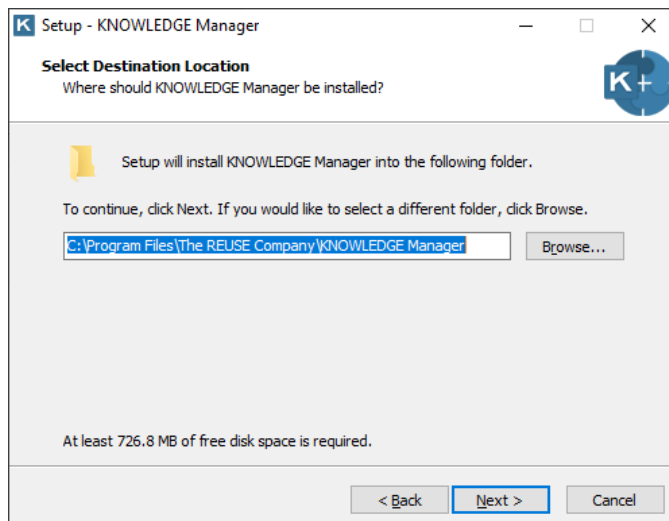


FIGURE 10

- **Select Start Menu Folder:** this window allows the user to select the location where the start menu shortcuts to the application will be created. By default, the installer proposes

to create them under the folder “The REUSE Company” and the subfolder with the name of the application:

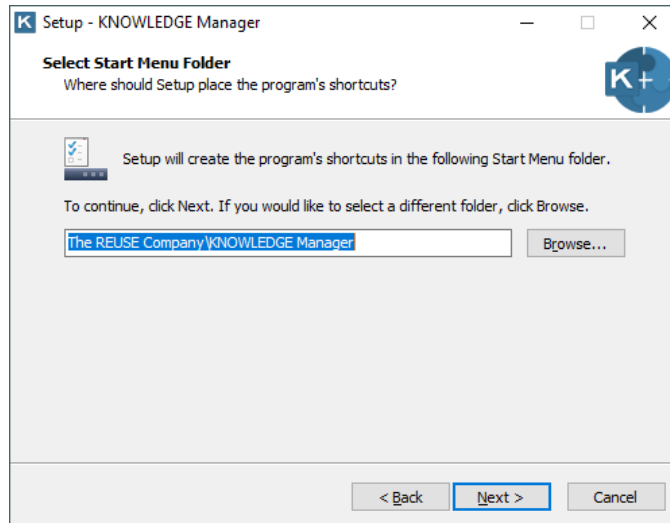


FIGURE 11

- **Ready to Install:** this is the last step before installing the application in your system. It holds a description of the parameters compiled through this installation wizard. If one or more of the parameters is not right for your installation, please click “< Back” until you reach the corresponding step to reconfigure your choices. When all the parameters are correct, please click on the “Install” button.

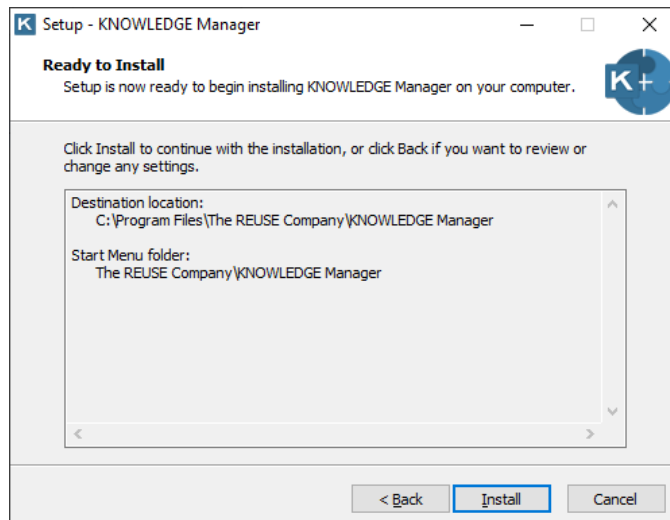


FIGURE 12

- **Installing:** this window does not require user interaction, as it waits until the installation is complete. In case the installation must be aborted, click on the “Cancel” button.

Otherwise, wait until the process is finished and the wizard will proceed automatically to the next step.

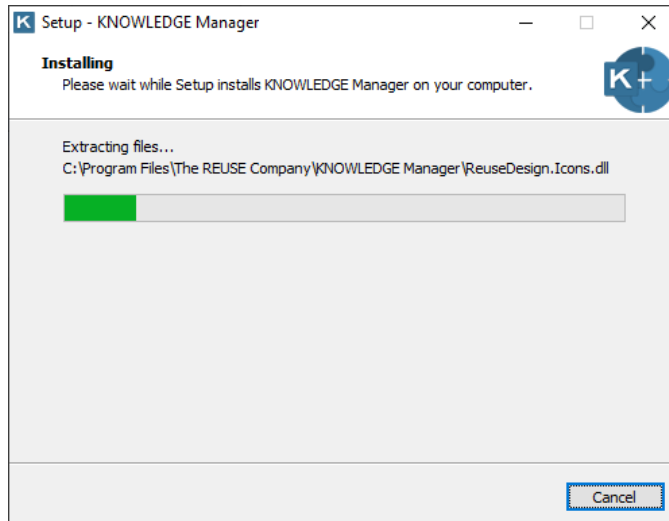


FIGURE 13

- Completing the KM – KNOWLEDGE Manager Setup Wizard: this window appears when the installation has finished successfully to report this status. Please click on the “Finish” button, and the installation process will be complete.

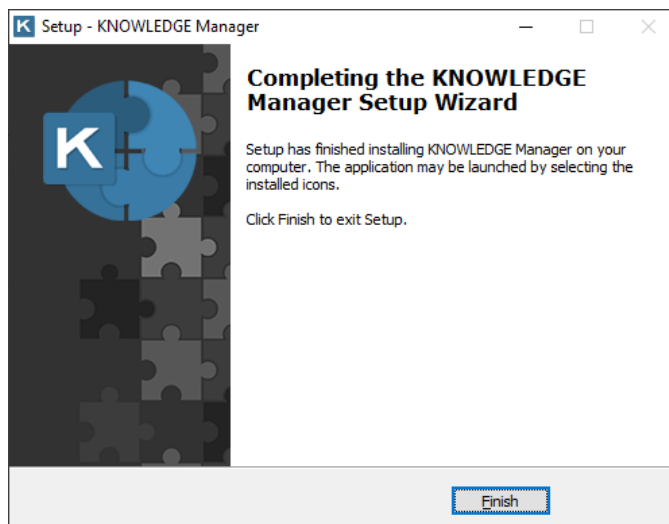


FIGURE 14

2.3 KM – KNOWLEDGE MANAGER Installation in Silent Mode

The command line with parameters to install it is like this:

```
<FileName>.exe /verysilent /dir="D:\REUSE\KmCustom" /GROUP="KM Custom
Group" /licenseServer localhost /licensePort 27000
/canRememberCredentials 1 /licenseCluster 1
```

NOTE: Remember to open the command line window with administration rights, before executing the previous command.

Mandatory parameters:

- /verysilent: installation mode
 - /dir="C:\custom\path\to\install\<install_app>"
 - /group="<group_folder_name_windows>"
- /licenseserver: FlexLM License Server hostname
- /licenseport: FlexLM License Server port

If you want to have the audit log of the SES Server you must replace the following parameters:

- /licenseserver → /rqssserver: SES Server hostname
- /licenseport → /rqssport: SES Server port

And the optional parameters for FlexLM high-availability mode are:

- /canRememberCredentials: allows the user to decide whether to save its credentials for the last connection used or not. The valid values for this parameter are:
 - 0: DO NOT show the "Remember" check box in the login window
 - 1: show the "Remember" check box in the login window
- /additionalLicenseServers: additional FlexLM servers in format and split by comma character (',')
- /licenseCluster: indicates FlexLM architecture according to:
 - 0: set of non-related FlexLM servers
 - 1: otherwise
- /security AD: using Active Directory items (users or groups) to log into KM. If this "/security AD" is not set, KM will use its own "KM – KNOWLEDGE Manager Authentication System", which means that the KM Users will be created and managed inside KM – KNOWLEDGE Manager.
- /connectionsFile: path to the file that contains the ontology database connections. Must contain the file extension. This can be an absolute or relative path.

3. DB Migration Tool Installation Guide

3.1 Introduction

This guide will assist you through the DB Migration Tool installation. This process can only be done after installing all the licensing components (FlexLM and TRC Vendor Daemon).

There are two ways to install DB Migration Tool:

- The most typical one is executing the installer with administration rights; an installation wizard will guide us to provide all the necessary parameters to perform the installation and at the end the tool will be installed.
- There is another way to install it from the command line where all the parameters are provided beforehand, and the installation will be done without any further user interaction.

3.2 Download

First, download the DB Migration Tool installer from the TRC website. Use your navigator to access <https://resources.reusecompany.com/downloads> and then look the version of the product you have licensed. Ask our support service if you need help to find it.

3.2.1 DB Migration Tool Installation with the Installation Wizard

Then, execute the installer:

- Select Setup Language: this first window allows selecting the language of the installation wizard. You can choose between English and Spanish.

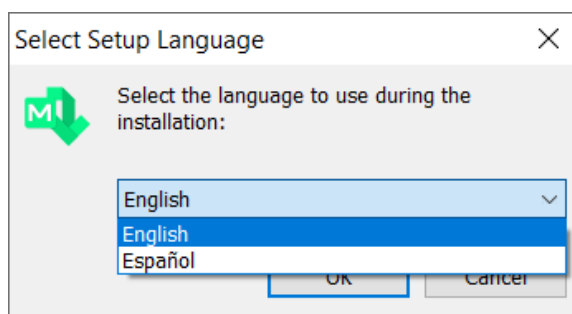


FIGURE 15

- Welcome: this window will introduce all the actions to be performed while installing the DB Migration Tool application, please read the instructions and click on the "Next >" button.

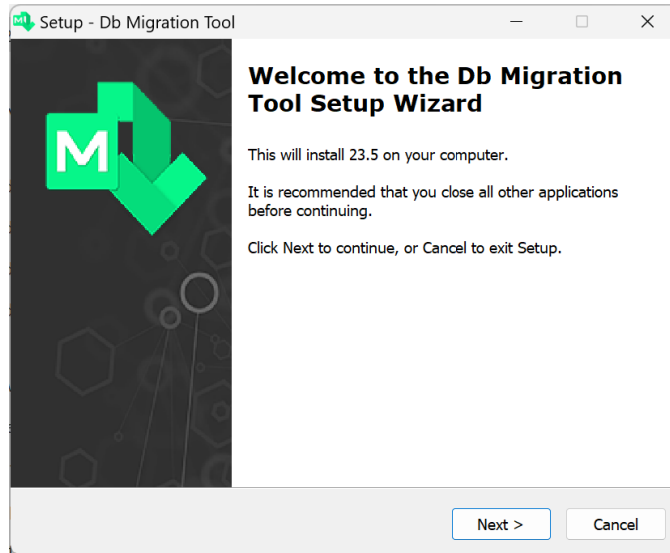


FIGURE 16

- **License Agreement:** this window will show the license agreement you will need to accept if you want to use the application. Please read it carefully before accepting it, then select the first option below the text and then click on the "Next >" button. However, if you do not agree, please click on the "Cancel" button; it will force the installation wizard to finish and it will not install the application.

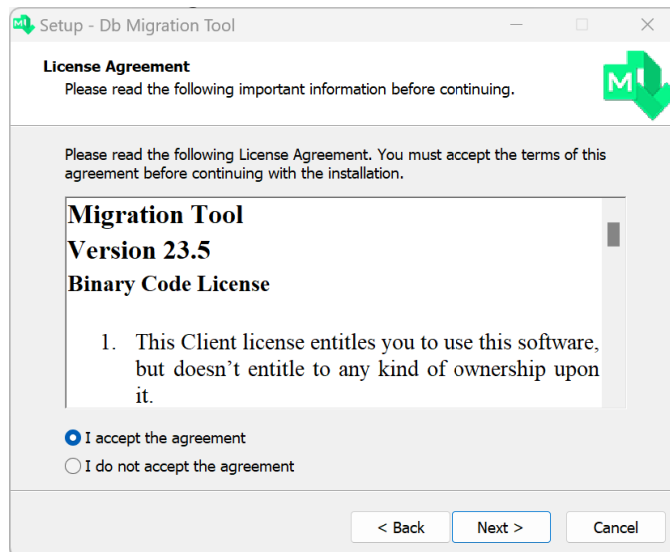
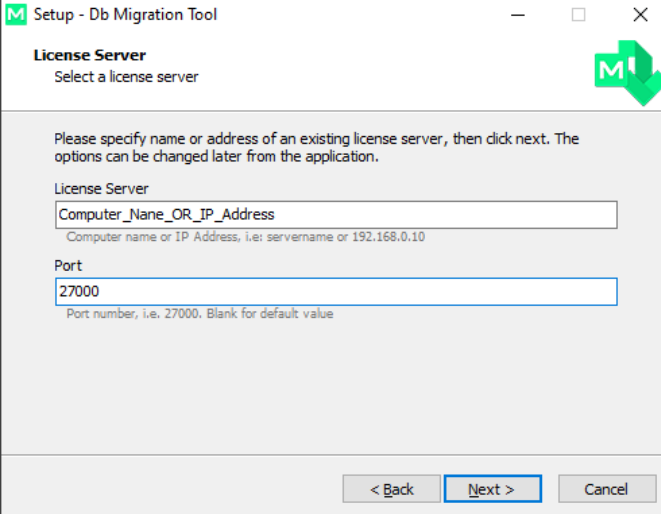


FIGURE 17

- **License Server:** this window prompts you to introduce the licensing information needed to run the application. Consider the FlexLM installation and your deployment scenario to fill up this window.

- The 'License Server' field corresponds to the machine name or IP address where the FlexLM is installed.
- The 'Port' field refers to the PUBLIC port of the FlexLM service you have defined. Remember that in the installation of the FlexLM service, there is a port, or a range published to listen to license requests and then a point to point connection is opened via the TRC Daemon port. In this field, the information required is the first setup, the public port.



Setup - Db Migration Tool

License Server
Select a license server

Please specify name or address of an existing license server, then click next. The options can be changed later from the application.

License Server
Computer_Name_OR_IP_Address
Computer name or IP Address, i.e: servername or 192.168.0.10

Port
27000
Port number, i.e. 27000. Blank for default value

< Back Next > Cancel

FIGURE 18

- **Select Destination Location:** this window allows the user to select the location where the application is going to be installed. By default, it will be suggested to install the application in the user's "Program files" folder under the folder "The REUSE Company" and the subfolder with the name of the application. This destination folder can be modified, either by typing it in the textbox or by clicking on the "Browse" button on the right-hand side and navigating through your computer storage system to find a suitable location. When the path is selected, please click on the "Next >" button.

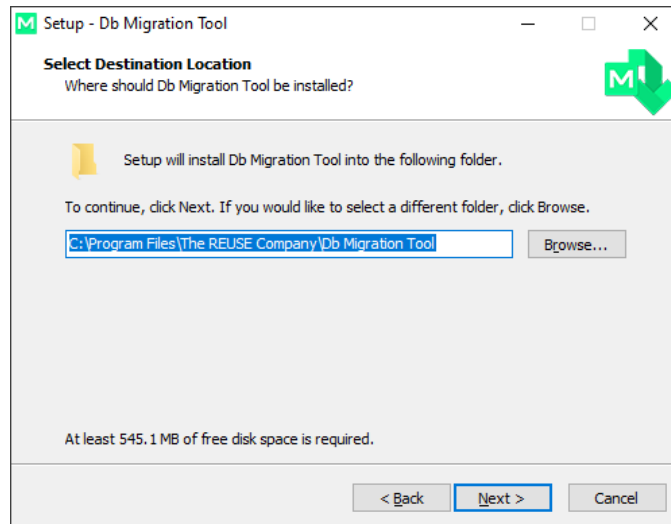


FIGURE 19

- **Select Start Menu Folder:** this window allows the user to select the location where the start menu shortcuts to the application will be created. By default, the installer proposes to create them under the folder "The REUSE Company" and the subfolder with the name of the application:

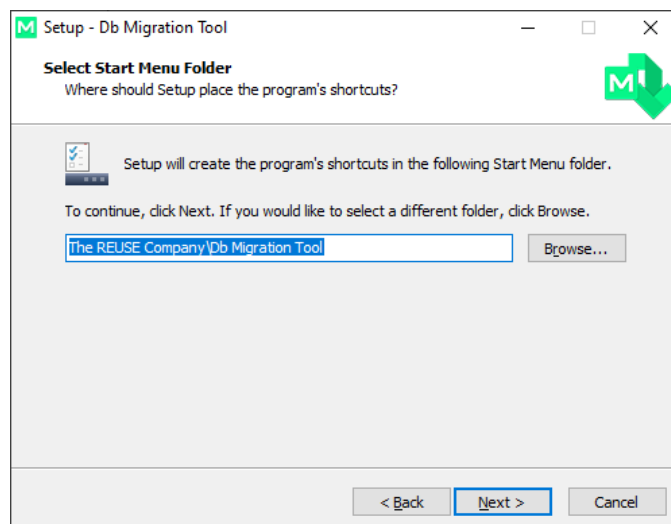


FIGURE 20

- **Ready to Install:** this is the last step before installing the application in your system. It holds a description of the parameters compiled through this installation wizard. If one or more of the parameters is not right for your installation, please click "< Back" until you reach the corresponding step to reconfigure your choices. When all the parameters are correct, please click on the "Install" button.

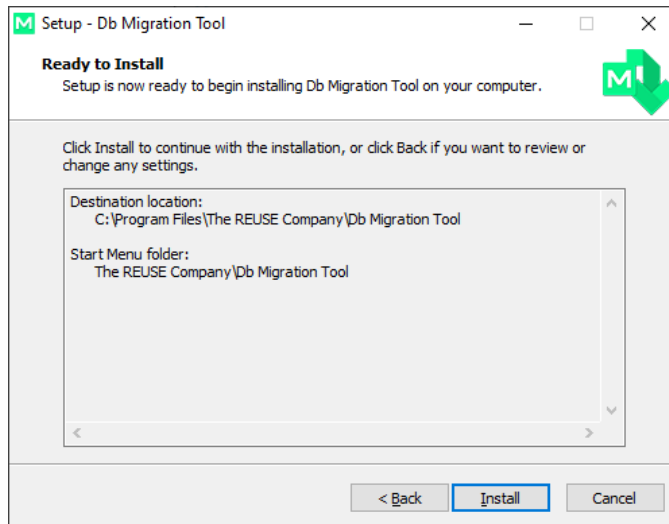


FIGURE 21

- **Installing:** this window does not require user interaction, as it waits until the installation is complete. In case the installation must be aborted, click on the “Cancel” button. Otherwise, wait until the process is finished and the wizard will proceed automatically to the next step.

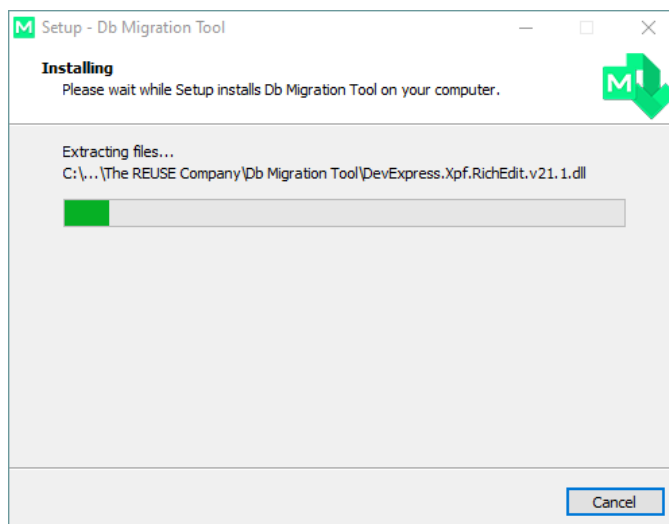


FIGURE 22

- **Completing the DB Migration Tool Setup Wizard:** this window appears when the installation has finished successfully to report this status. Please click on the “Finish” button, and the installation process will be complete.

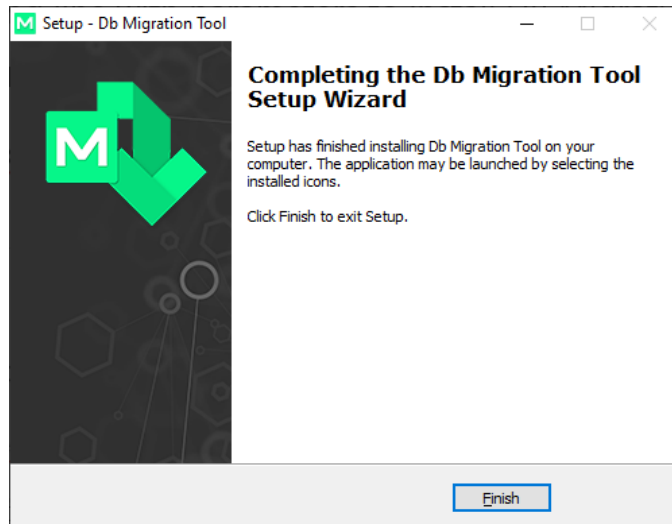


FIGURE 23

3.2.2 DB Migration Tool Installation in Silent Mode

The command line with parameters to install it is like this:

```
<FileName>.exe /verysilent /dir="D:\REUSE \EsCustom" /GROUP="ES  
Custom Group" /licenseServer <your.host.name> /licensePort  
<portNumber>
```

NOTE: Remember to open the command line window with administration rights, before executing the previous command.

Mandatory parameters:

- /verysilent: installation mode
 - /dir="C:\custom\path\to\install\<install_app>"
 - /group="<group_folder_name_windows>"
- /licenseserver: FlexLM License Server hostname
- /licenseport: FlexLM License Server port

3.3 Use of DB Migration Tool

To migrate a database, it is always recommended to have a backup of the database.

As well it is needed to have specific rights on the database to be able to migrate the database.

SQL Server

- db_writer
- db_reader
- db_ddladmin

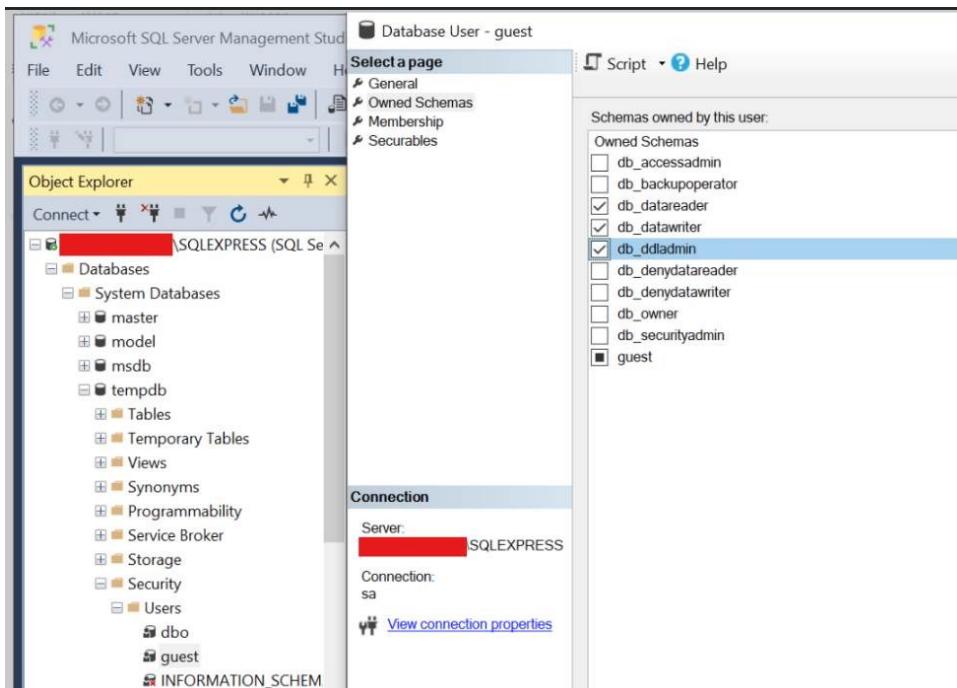


FIGURE 24

MySQL

- Object rights – all
- DDL rights – create, alter (references, index), alter routine, event (drop), Trigger
- Other Rights – lock tables

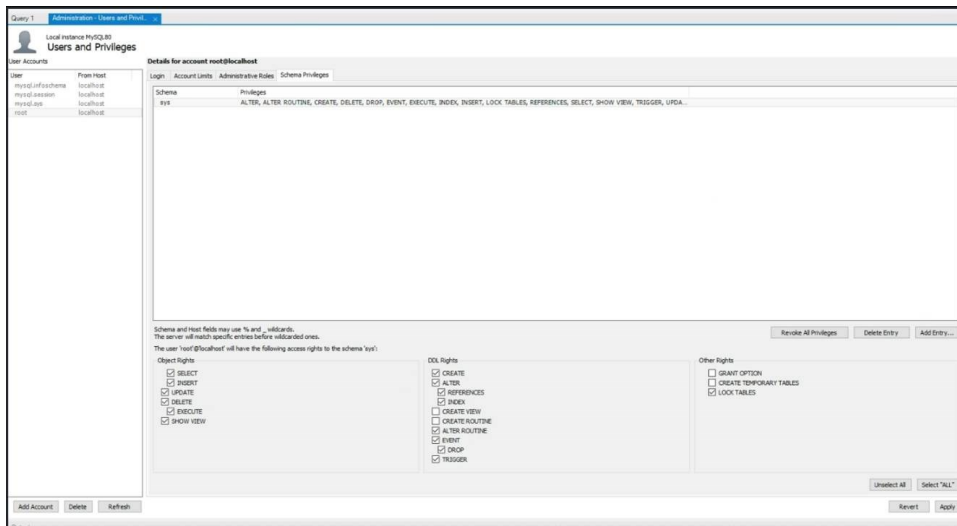


FIGURE 25

The DB Migration Tool connection window reads all the connections set up for KM – KNOWLEDGE Manager. Thus, the next step is to select the desired connection or connections to update, and then click on the "Migrate" button.

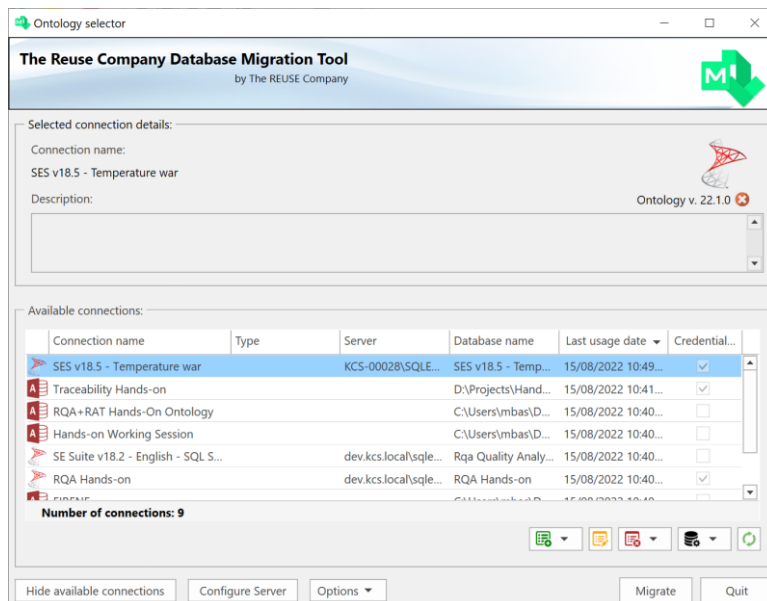


FIGURE 26

Once the connection or connections have been selected, DB Migration Tool pops up a new window to enter the original version of the database.

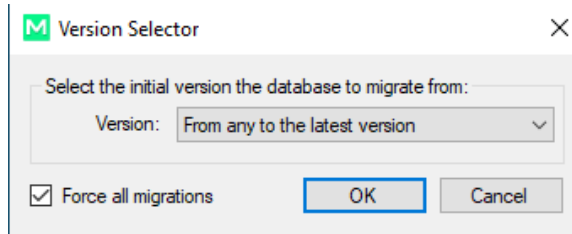


FIGURE 27

The suitable option for most of the cases is the default option ("From any to the latest version") because it determines the source version of the migration automatically. If there are errors from previous migration attempts, try again, but this time selecting the option *Force all v19 and v20*.

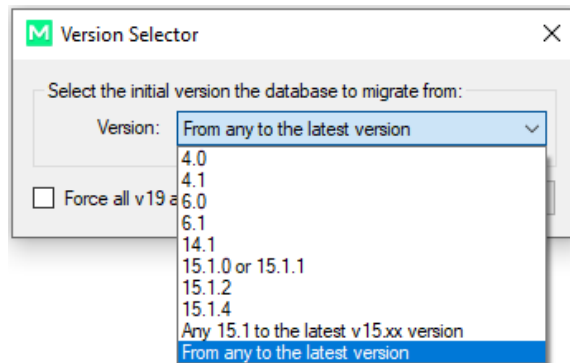


FIGURE 28

Then click on the "Accept" button and the migration will start. After some seconds, the database will be updated and ready to work.

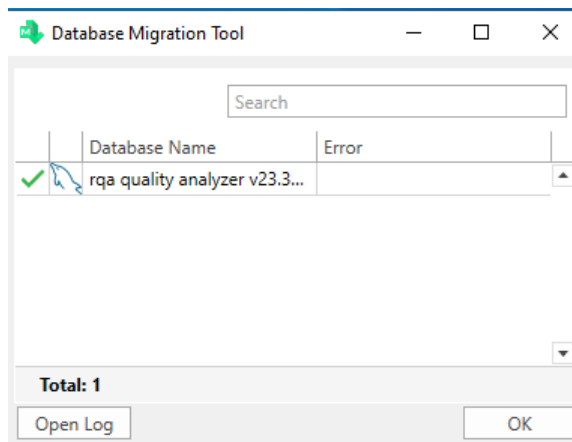


FIGURE 29

At the same time, the log file for each migrated database is shown (if there is not a default application for txt files, the Windows application selection window will appear).

```
1
2 Connection parameters:
3 Type: OleDbAccess
4 Host:
5 Database: D:\Ontologies\Access\SES v18.5_mig (English).accdb
6 User:
7
8
9 Result: Success
10 Elapsed time: 15.445 s
11
12 Log:
13
14 Data migration finished successfully
15
```

FIGURE 30

If the migration finishes successfully, you can close the window.

If the migration reports any error, please use Notepad or Notepad++ to check the log file. Please, send this migration log to our support service to find the possible source of the problem.

4. KM – KNOWLEDGE Manager Online Web Edition Installation Guide

4.1 Download

First, download the KM – KNOWLEDGE Manager Online Web Edition installer from the TRC website. Use your navigator to access <https://resources.reusecompany.com/downloads> and then look the version of the product you have licensed. Ask our support service if you need help to find it.

4.2 KM – KNOWLEDGE Manager Online Web Edition Installation

Then, execute the installer:

- Select Setup Language: in this first window you can select the language of the installation wizard. You can choose between English and Spanish.

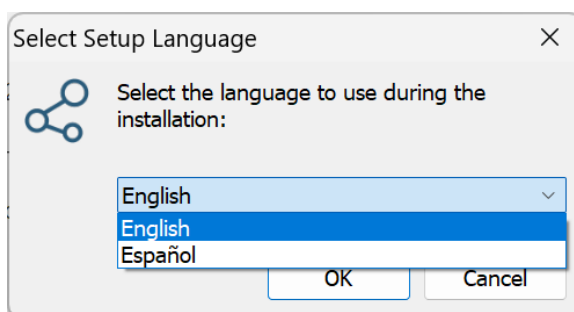


FIGURE 31

NOTE: This language selection is not the language that the KM – KNOWLEDGE Manager Online Web Edition user interface will have. You can configure the KM – KNOWLEDGE Manager Online Web Edition interface language within the tool.

- Welcome: this window will introduce all the actions to be performed while installing the KM – KNOWLEDGE Manager Online Web Edition application, you only have to read the instructions and click on the "Next >" button.

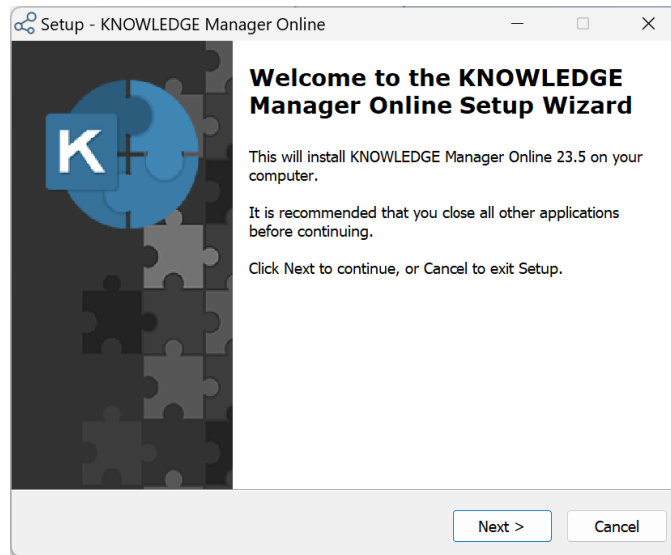


FIGURE 32

- **License Agreement:** this window will show the license agreement you will need to accept if you want to use the application. Please read it carefully before accepting it, then select the first option below the text and then click on the "Next >" button. However, if you do not agree, please click on the "Cancel" button; it will force the installation wizard to finish and it will not install the application.

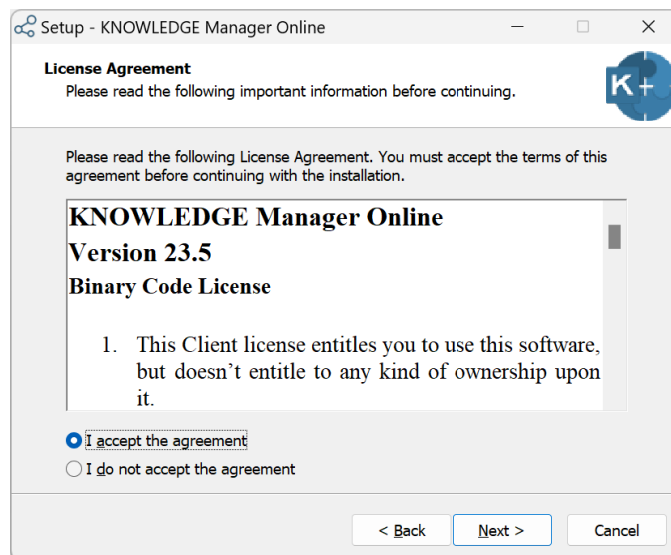


FIGURE 33

- **Select Destination Location:** this window allows the user to select the location where the application is going to be installed. By default, it will be suggested to install the application in the user's "Program files" folder under the folder "The REUSE Company"

and the subfolder with the name of the application. This destination folder can be modified, either by typing it in the textbox or by clicking on the "Browse" button on the right-hand side and navigating through the computer storage system to find a suitable location. When the path is selected, please click on the "Next >" button.

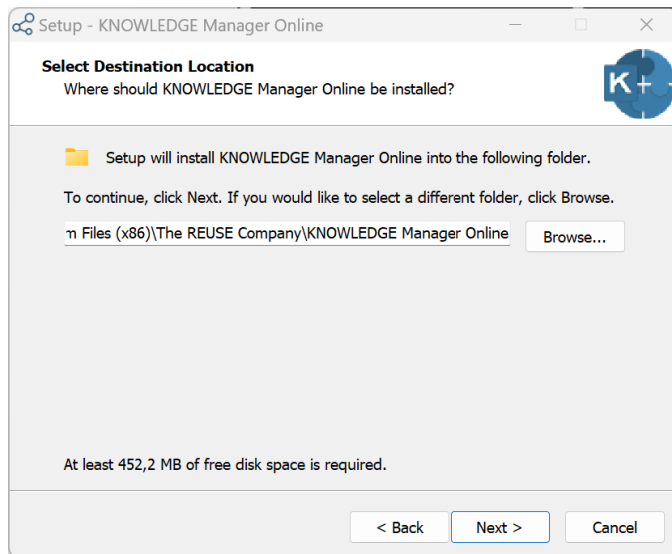


FIGURE 34

- Web service setup: here, the user will choose the suitable parameters to set up the web service. These include the name of the web service, the port, and options for using HTI and/or Windows authentication. After selecting the parameters, please click on the "Next >" button.

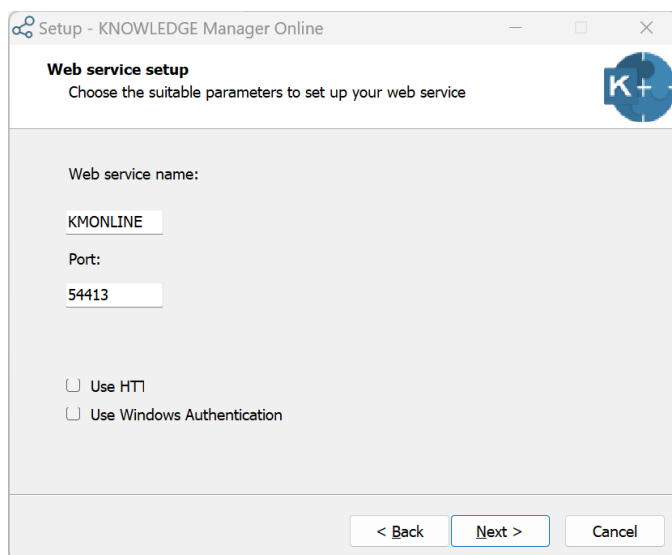


FIGURE 35

- **Application Pool setup:** here, the user will choose the suitable parameters to set up the application pool, setting the username and password. After selecting the parameters, please click on the "Next >" button.

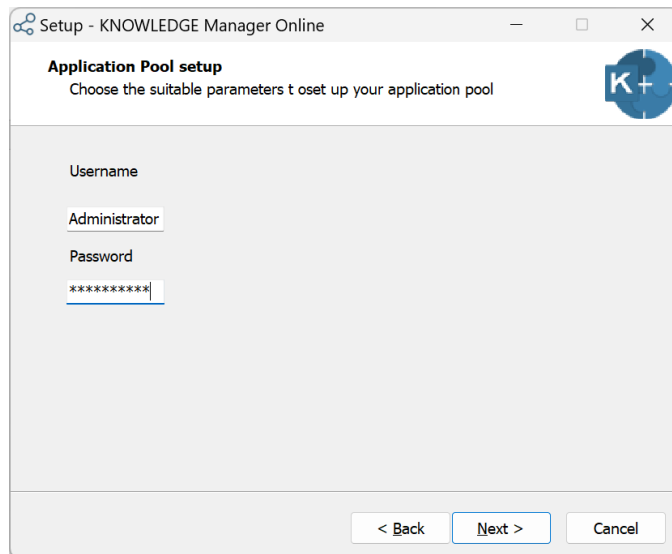


FIGURE 36

- **Select Start Menu Folder:** this window allows the user to select the location where the start menu shortcuts to the application will be created. By default, the installer proposes to create them under the folder "The REUSE Company" and the subfolder with the name of the application:

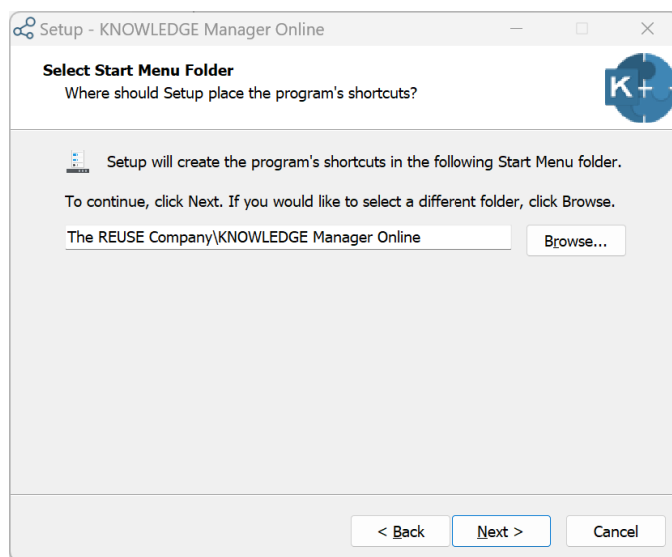


FIGURE 37

- **Ready to Install:** this is the last step before installing the application in your system. It holds a description of the parameters compiled through this installation wizard. If one or more of the parameters is not right for your installation, please click "< Back" until you reach the corresponding step to reconfigure your choices. When all the parameters are correct, please click on the "Install" button.

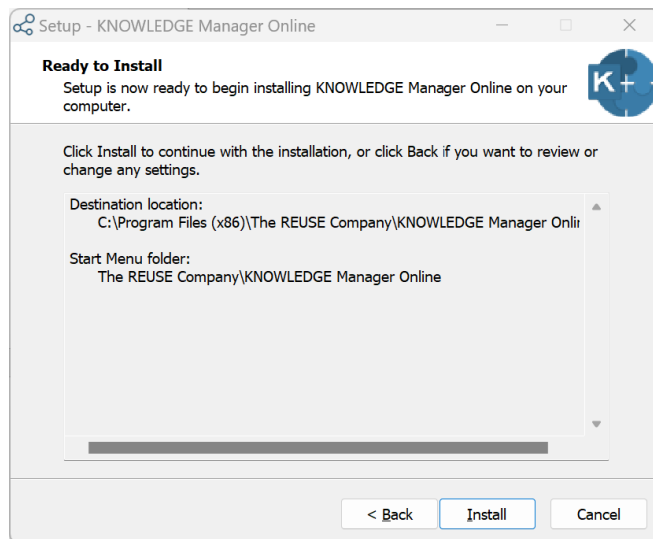


FIGURE 38

- **Installing:** this window does not require user interaction, as it waits until the installation is complete. In case the installation must be aborted, click on the "Cancel" button. Otherwise, wait until the process is finished and the wizard will proceed automatically to the next step.

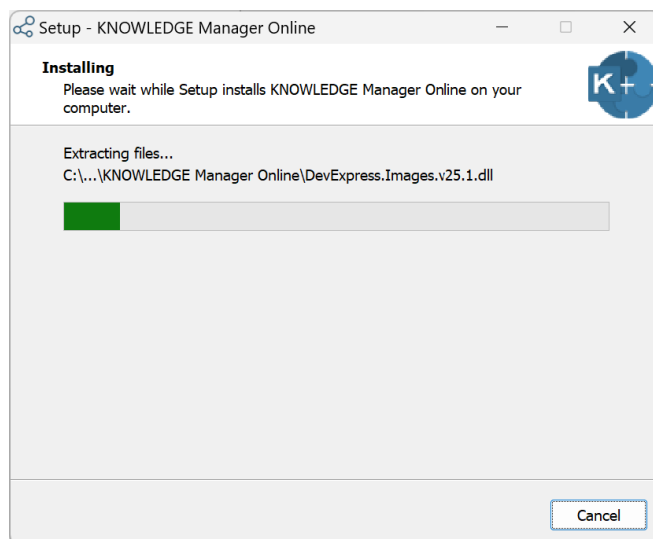


FIGURE 39

- Completing the KM – KNOWLEDGE Manager Online Setup Wizard: this window appears when the installation has finished successfully to report this status. Please click on the “Finish” button, and the installation process will be complete.

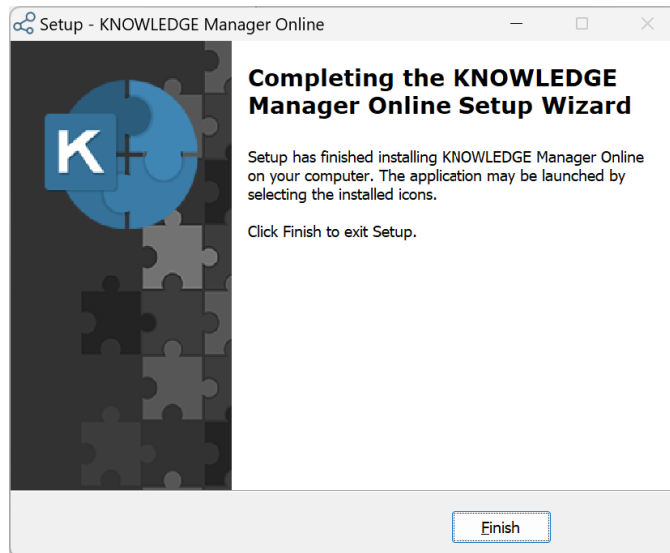


FIGURE 40

The REUSE Company

The REUSE Company is an organization specialized in the application of Semantic Representation and Analysis Technologies to a wide range of industries (Aerospace, Defense, Automotive, Naval, Health, ...). Our customers are usually (but not limited to) safety-oriented organizations.

Our focus is on System/Software Reuse, Traceability and Quality applied to all types of work-products throughout the whole SE lifecycle (requirements, SysML Models, physical models, tests cases, data results, manuals, natural language descriptions, fault trees, etc.). The integration of tools and technology from The REUSE Company facilitates the representation, analysis and exploitation of knowledge allowing for a knowledge-centric system engineering approach.

Our mission is to promote system/software and knowledge reuse within any organization, by offering processes, methods, tools and services that make it possible. We offer technology that is fully integrated within the organization's production chain.

